

MILLBROOK, NEW YORK

AL-5473 (FAA)

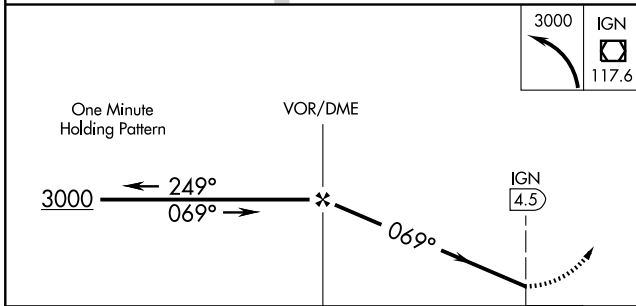
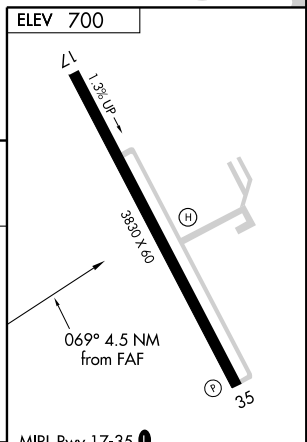
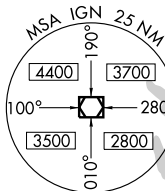
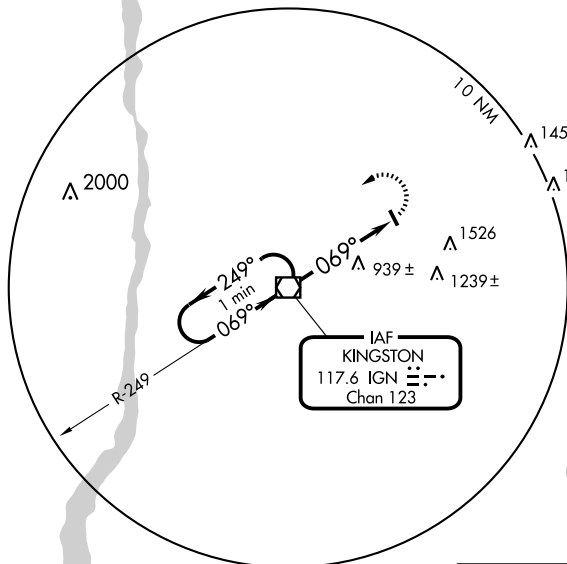
VOR-A

MILLBROOK/ SKY ACRES (44N)

APP CRS 069°	Rwy Idg TDZE Apt Elev	N/A N/A 700
------------------------	-----------------------------	--

▽ Use Poughkeepsie altimeter setting. NoPT for arrival on IGN VOR/DME airway radials 203 CW 316.	MISSED APPROACH: Climbing left turn to 3000 direct IGN VOR/DME and hold.
---	---

POUGHKEEPSIE ASOS 126.75	NEW YORK APP CON 132.75 363.1	UNICOM 122.8 (CTAF) 0
------------------------------------	---	---------------------------------



CATEGORY	A	B	C	D	FAF to MAP 4.5 NM
CIRCLING	1580 - 1 880 (900-1)	1580 - 1¼ 880 (900-1¼)	NA		Knots: 60 90 120 150 180 Min:Sec: 4:30 3:00 2:15 1:48 1:30

MILLBROOK, NEW YORK
Amdt 8 08101

41°42'N - 73°44'W

MILLBROOK/ SKY ACRES (44N)

VOR-A

NE-2, 29 JUL 2010 to 26 AUG 2010

NE-2, 29 JUL 2010 to 26 AUG 2010