

RUSHVILLE, NEBRASKA

AL-10381 (FAA)

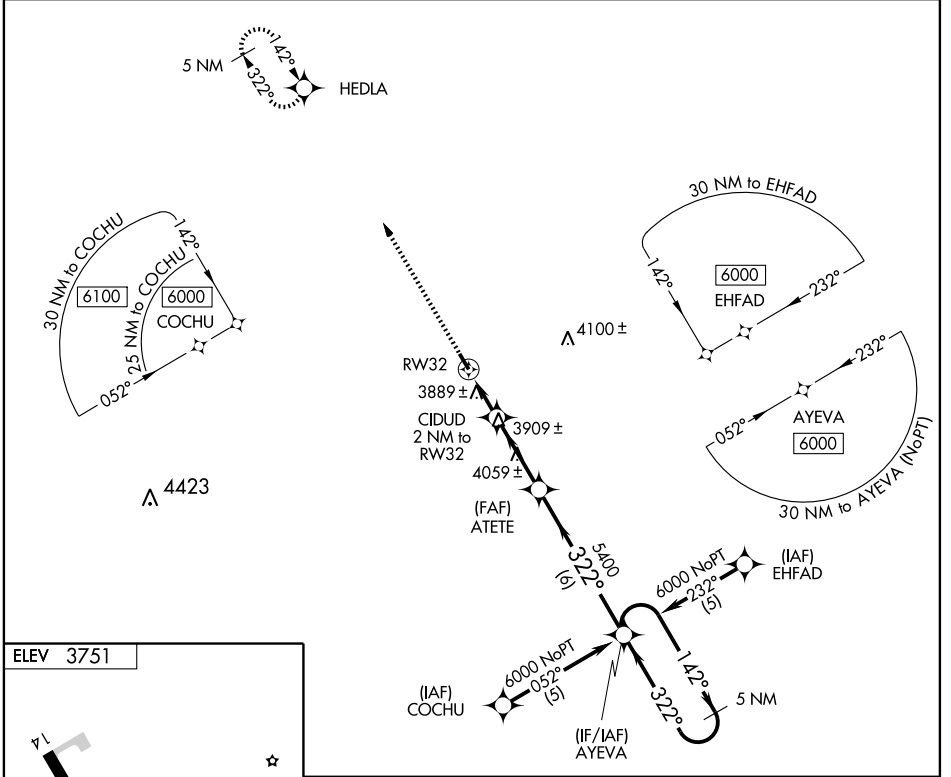
WAAS CH 78214 W32A	APP CRS 322°	Rwy ldg TDZE Apt Elev	3909 3751 3751
--	------------------------	-----------------------------	---

RNAV (GPS) RWY 32

RUSHVILLE/MODISETT (9V5)

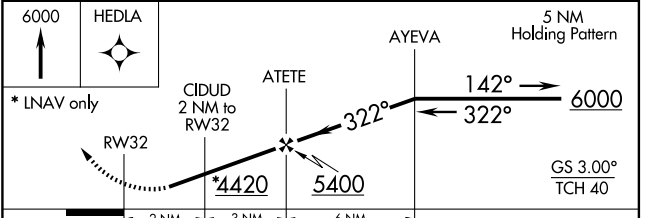
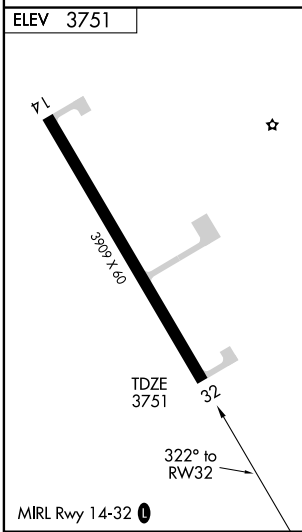
▼ Baro-VNAV NA. DME/DME RNP-0.3 NA. Visibility reduction by helicopters NA. Use Pine Ridge altimeter setting.
▲ NA MISSED APPROACH: Climb to 6000 direct HEDLA and hold.

PINE RIDGE ASOS 126.775	DENVER CENTER 127.95 338.2	CTAF 122.9 0
-----------------------------------	--------------------------------------	------------------------



NC-2, 22 OCT 2009 to 19 NOV 2009

NC-2, 22 OCT 2009 to 19 NOV 2009



CATEGORY	A	B	C	D
LPV DA	4181-1½	430 (500-1½)	NA	
LNAV/VNAV DA	4294-2	543 (600-2)	NA	
LNAV MDA	4320-1	569 (600-1)	NA	
CIRCLING	4380-1	4400-1	NA	
	629 (700-1)	649 (700-1)	NA	

RUSHVILLE, NEBRASKA
Orig 9239

42°44'N - 102°27'W

RNAV (GPS) RWY 32