

RUSHVILLE, NEBRASKA

AL-10381 (FAA)

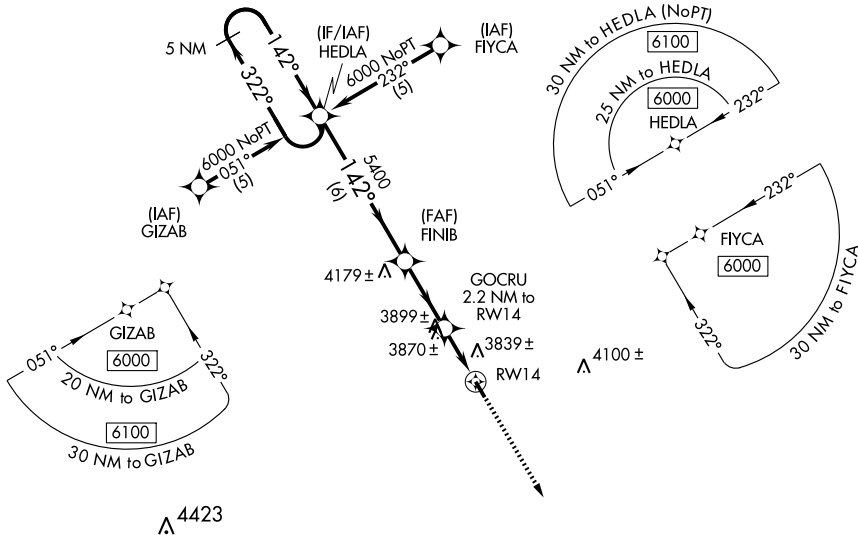
WAAS CH 72814 W14A	APP CRS 142°	Rwy ldg TDZE Apt Elev	3909 3751 3751
----------------------------------------	------------------------	-----------------------------	-------------------------------------------

RNAV (GPS) RWY 14

RUSHVILLE/MODISETT (9V5)

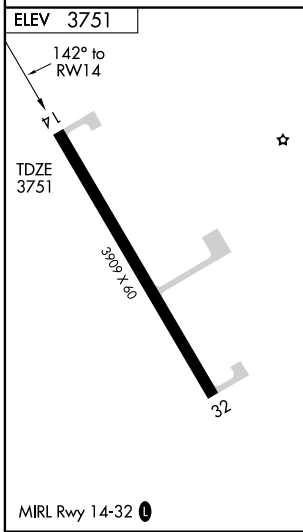
Baro-VNAV NA. DME/DME RNP-0.3 NA.
 Use Pine Ridge altimeter setting.
 MISSED APPROACH: Climb to 6000 direct AYEVA and hold.

PINE RIDGE ASOS 126.775	DENVER CENTER 127.95 338.2	CTAF 122.9 0
-----------------------------------	--------------------------------------	------------------------



NC-2, 22 OCT 2009 to 19 NOV 2009

NC-2, 22 OCT 2009 to 19 NOV 2009



5 NM Holding Pattern		HEDLA		6000	AYEVA
← 322°		→ 142°		↑	✧
GS 3.00°		FINIB		*LNAV only	
TCH 40		GOCRU 2.2 NM to RW14		RW14	
		5400		*4480	
		6 NM		2.8 NM	
				2.2 NM	
CATEGORY	A	B	C	D	
LPV DA	4117-1½	366 (400-1½)			NA
LNAV/VNAV DA	4279-2	528 (600-2)			NA
LNAV MDA	4300-1	549 (600-1)			NA
CIRCLING	4380-1	4400-1			NA
	629 (700-1)	649 (700-1)			

RUSHVILLE, NEBRASKA
 Orig 09239

42°44'N - 102°27'W

RNAV (GPS) RWY 14