
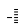


RNAV (GPS) RWY 32

BRANSON (BBG)

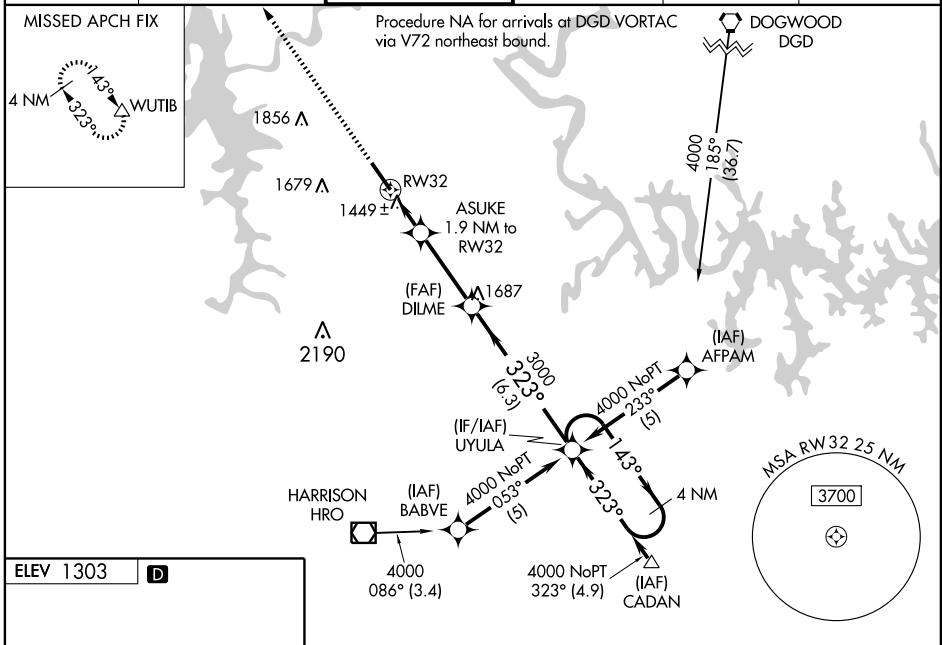
WAAS CH 93911 W32A	APP CRS 323°	Rwy Idg 7140 TDZE 1302 Apt Elev 1303
--	------------------------	---

⚠ DME/DME RNP-0.3 NA. Visibility reduction by helicopters NA.
⚠ When local altimeter setting not received, use Harrison altimeter setting and increase all DA 47 feet and all MDA 60 feet.
 Increase LNAV/VNAV all Cats visibility ¼ mile, LNAV Cat C visibility ½ mile, Cat D visibility ¼ mile, and circling Cat D visibility ¼ mile.
 VDP and Baro-VNAV NA when using Harrison altimeter setting.
 For uncompensated Baro-VNAV systems, LNAV/VNAV NA below -17°C (2°F) or above 46°C (114°F).

MALSF  

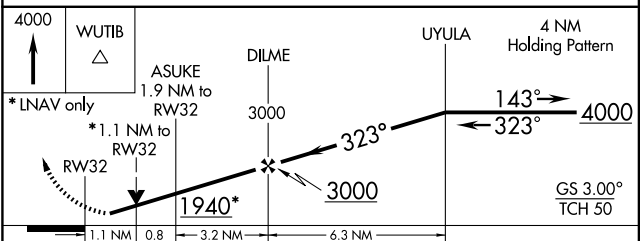
MISSED APPROACH: Climb to 4000 direct WUTIB and hold.

ATIS 124.625	SPRINGFIELD APP CON 126.35	BRANSON TOWER * 128.15 (CTAF) 	GND CON 118.4	CLNC DEL 126.35	UNICOM 122.95
------------------------	--------------------------------------	---	-------------------------	---------------------------	-------------------------



NC-3, 22 OCT 2009 to 19 NOV 2009

NC-3, 22 OCT 2009 to 19 NOV 2009



CATEGORY	A	B	C	D
LPV DA	1502-1		200 (200-1)	
LNAV/VNAV DA	1757-1½		455 (500-1½)	
LNAV MDA	1700-1		398 (400-1)	
CIRCLING	1760-1 457 (500-1)	1780-1 477 (500-1)	1780-1½ 477 (500-1½)	1700-1¼ 398 (400-1¼)