

RNAV (GPS) RWY 14

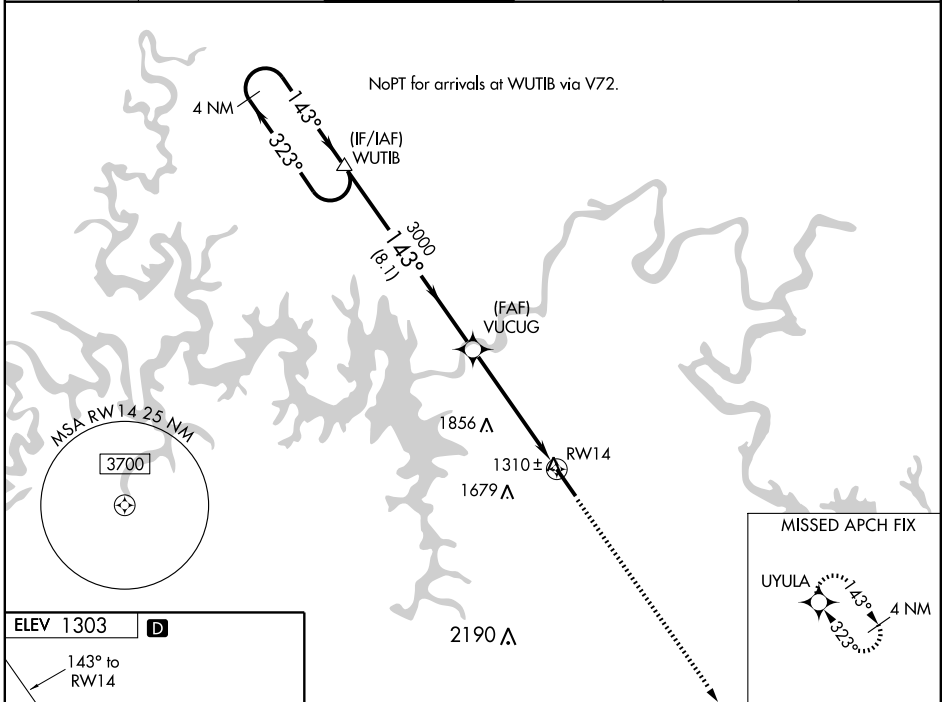
BRANSON (BBG)

WAAS CH 49111 W14A	APP CRS 143°	Rwy Idg 7140 TDZE 1275 Apt Elev 1303
--	------------------------	---

⚠ For uncompensated Baro-VNAV systems, LNAV/VNAV NA below -17°C (2°F) or above 46°C (114°F). DME/DME RNP-0.3 NA.
⚠ When local altimeter setting not received, use Harrison altimeter setting and increase all DA 47 feet and all MDA 60 feet.
 VDP and Baro-VNAV NA when using Harrison altimeter setting.

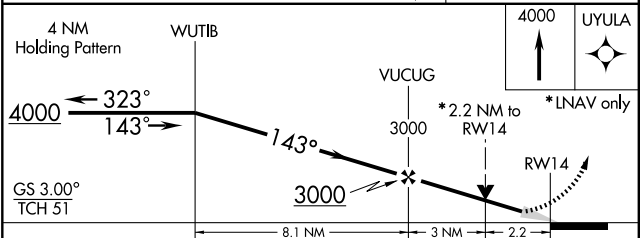
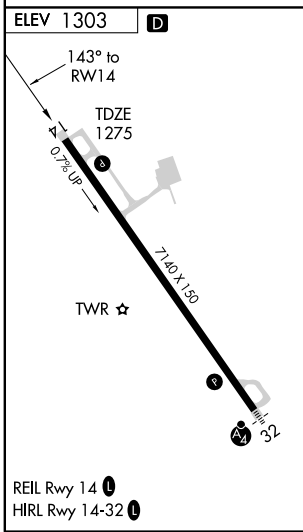
MISSED APPROACH: Climb to 4000 direct UYULA and hold.

ATIS 124.625	SPRINGFIELD APP CON 126.35	BRANSON TOWER * 128.15 (CTAF) 0	GND CON 118.4	CLNC DEL 126.35	UNICOM 122.95
------------------------	--------------------------------------	--	-------------------------	---------------------------	-------------------------



NC-3, 22 OCT 2009 to 19 NOV 2009

NC-3, 22 OCT 2009 to 19 NOV 2009



CATEGORY	A	B	C	D
LPV DA		1525-1	250 (300-1)	
LNAV/VNAV DA		1798-2	523 (500-2)	
LNAV MDA	2020-1 745 (800-1)	2020-1¼ 745 (800-1¼)	2020-2¼ 745 (800-2¼)	2020-2½ 745 (800-2½)
CIRCLING	2020-1 717 (800-1)	2020-1¼ 717 (800-1¼)	2020-2¼ 717 (800-2¼)	2020-2½ 717 (800-2½)