

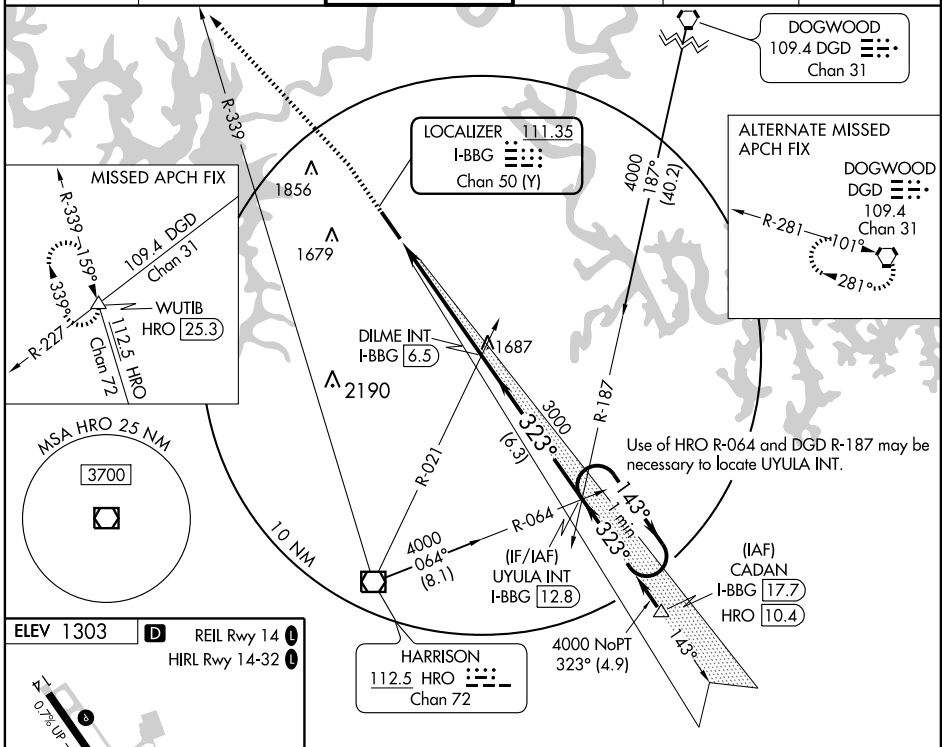
LOC/DME I-BBG 111.35 Chan 50 (Y)	APP CRS 323°	Rwy Idg TDZE Apt Elev	7140 1302 1303
---	------------------------	-----------------------------	---

ILS or LOC RWY 32

BRANSON (BBG)

<p>▼ Visibility reduction by helicopters NA.</p> <p>▲ NA When local altimeter setting not received, use Harrison altimeter setting and increase DA 47 feet and all MDA 80 feet and increase circling Cat D visibility ¼ mile.</p> <p>VDP NA when using Harrison altimeter setting.</p>	<p>MALSF</p>	<p>MISSED APPROACH: Climb to 1800 then climbing left turn to 4000 via heading 315° and HRO VOR/DME R-339 to WUTIB INT/HRO 25.3 DME and hold.</p>
--	--------------	--

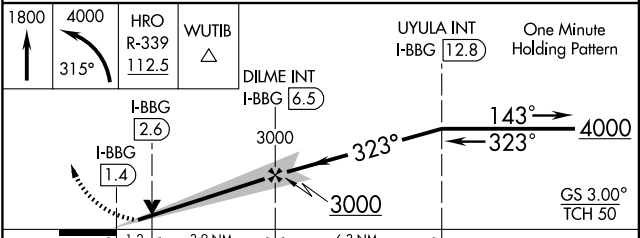
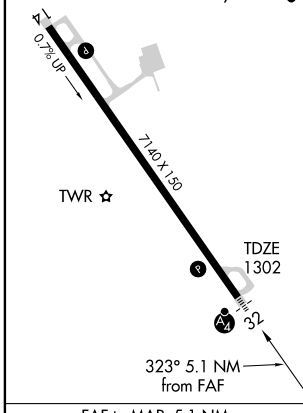
ATIS 124.625	SPRINGFIELD APP CON 126.35	BRANSON TOWER ★ 128.15 (CTAF)	GND CON 118.4	CLNC DEL 126.35	UNICOM 122.95
------------------------	--------------------------------------	---	-------------------------	---------------------------	-------------------------



NC-3, 22 OCT 2009 to 19 NOV 2009

NC-3, 22 OCT 2009 to 19 NOV 2009

ELEV 1303	REIL Rwy 14
	HIRL Rwy 14-32



CATEGORY	A	B	C	D
S-ILS 32	1502-1		200 (200-1)	
S-LOC 32	1740-1	438 (500-1)	1740-1½ 438 (500-1¼)	1740-1½ 438 (500-1½)
CIRCLING	1760-1 457 (500-1)	1780-1 477 (500-1)	1780-1½ 477 (500-1½)	2000-2½ 697 (700-2¼)