

# RNAV (GPS) RWY 20

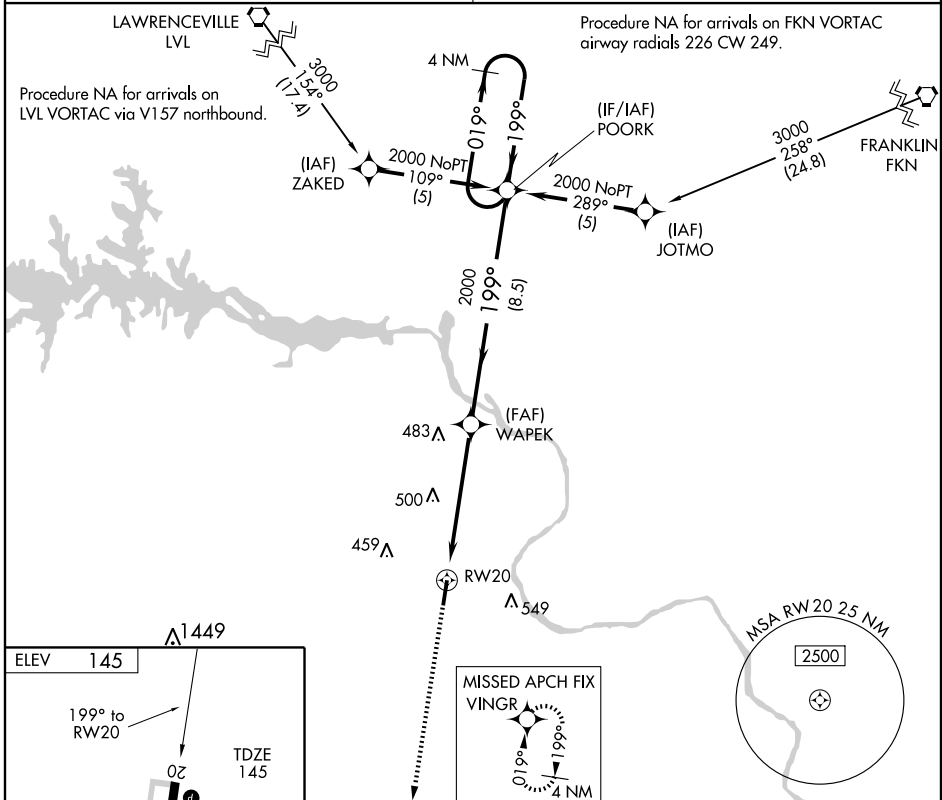
ROANOKE RAPIDS/HALIFAX-NORTHAMPTON RGNL (IXA)

APP CRS	Rwy Idg	<b>5500</b>
<b>199°</b>	TDZE	<b>145</b>
	Apt Elev	<b>145</b>

**⚠** DME/DME RNP -0.3 NA. When local altimeter setting not received, use Ahoskie altimeter setting and increase all MDA 80 feet, increase LNAV and Circling Cats. C/D visibility ¼ mile. VDP NA when using Ahoskie altimeter setting. Circling NA east of Rwy 2-20.

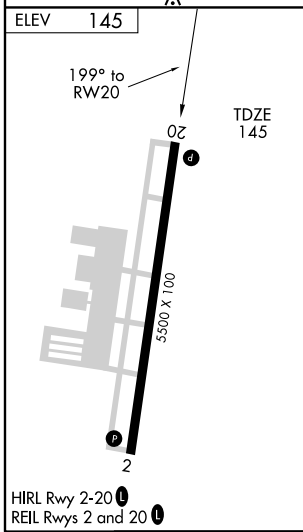
**MISSED APPROACH:** Climb to 2000 direct VINGR and hold.

WASHINGTON CENTER <b>132.02 290.425</b>	UNICOM <b>123.075 (CTAF)</b>
--	---------------------------------



SE-2, 22 OCT 2009 to 19 NOV 2009

SE-2, 22 OCT 2009 to 19 NOV 2009



2000	VINGR	VGSI and descent angles not coincident.	4 NM Holding Pattern															
<table border="1"> <thead> <tr> <th>CATEGORY</th> <th>A</th> <th>B</th> <th>C</th> <th>D</th> </tr> </thead> <tbody> <tr> <td>LNAV MDA</td> <td>760-1</td> <td>615 (700-1)</td> <td>760-1<sup>3</sup>/<sub>4</sub> 615 (700-1<sup>3</sup>/<sub>4</sub>)</td> <td>760-2 615 (700-2)</td> </tr> <tr> <td>CIRCLING</td> <td>760-1</td> <td>615 (700-1)</td> <td>760-1<sup>3</sup>/<sub>4</sub> 615 (700-1<sup>3</sup>/<sub>4</sub>)</td> <td>760-2 615 (700-2)</td> </tr> </tbody> </table>	CATEGORY	A	B	C	D	LNAV MDA	760-1	615 (700-1)	760-1 <sup>3</sup> / <sub>4</sub> 615 (700-1 <sup>3</sup> / <sub>4</sub> )	760-2 615 (700-2)	CIRCLING	760-1	615 (700-1)	760-1 <sup>3</sup> / <sub>4</sub> 615 (700-1 <sup>3</sup> / <sub>4</sub> )	760-2 615 (700-2)			
CATEGORY	A	B	C	D														
LNAV MDA	760-1	615 (700-1)	760-1 <sup>3</sup> / <sub>4</sub> 615 (700-1 <sup>3</sup> / <sub>4</sub> )	760-2 615 (700-2)														
CIRCLING	760-1	615 (700-1)	760-1 <sup>3</sup> / <sub>4</sub> 615 (700-1 <sup>3</sup> / <sub>4</sub> )	760-2 615 (700-2)														

# RNAV (GPS) RWY 20