

DALLAS, GEORGIA

AL-10368 (FAA)

WAAS CH 99511 W31A	APP CRS 311°	Rwy Idg TDZE 1283 Apt Elev 1289	5505 1283 1289
--	------------------------	---	---

RNAV (GPS) RWY 31

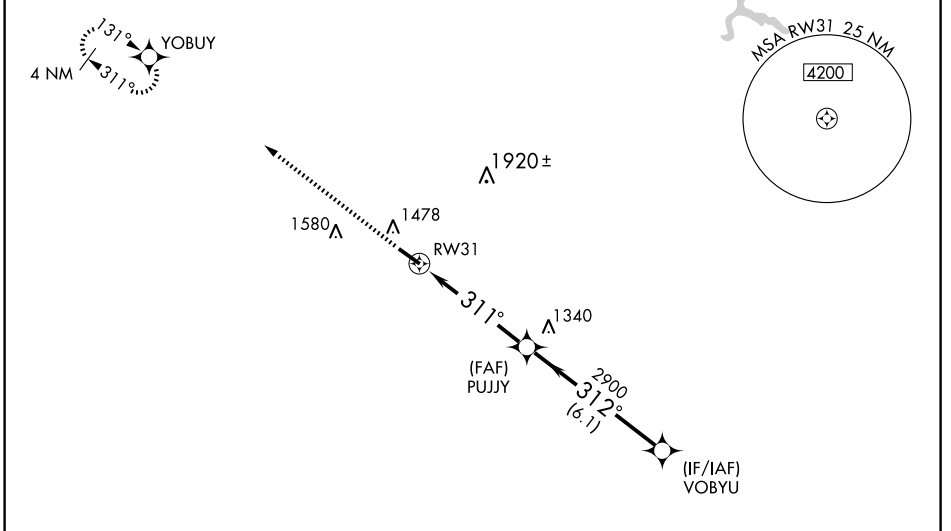
DALLAS/PAULDING COUNTY RGNL (PUJ)

▽ For uncompensated Baro-VNAV systems, LNAV/VNAV NA below -17°C (2°F) or above 46°C (114°F). When local altimeter setting not received, use Cartersville altimeter setting and increase all DA 106 feet, all MDA 120 feet, increase LPV all Cats. visibility ¼ mile, increase LNAV/VNAV all Cats. visibility ¼ mile, LNAV Cat. C and D visibility ¼ mile, Circling Cat. C and D visibility ½ mile. Baro-VNAV and VDP NA when using Cartersville altimeter setting. DME/DME RNP-0.3 NA.

△ NA

MISSED APPROACH: Climb to 3000 direct YOBUY and hold.

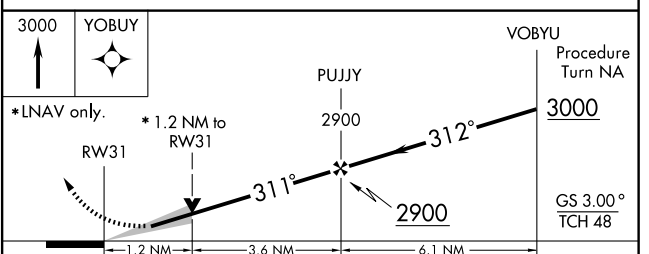
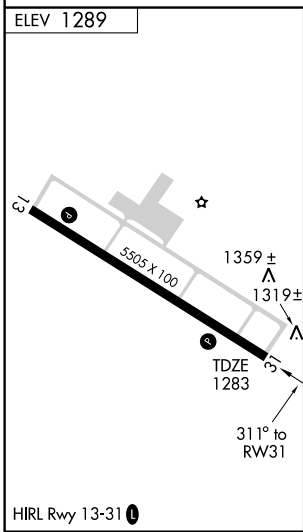
AWOS-3 126.225	ATLANTA APP CON 121.0 268.7	UNICOM 123.075 (CTAF) 0
--------------------------	---------------------------------------	-----------------------------------



SE-4, 22 OCT 2009 to 19 NOV 2009

SE-4, 22 OCT 2009 to 19 NOV 2009

RADAR REQUIRED



CATEGORY	A	B	C	D
LPV DA	1483- ³ / ₄		200 (200- ³ / ₄)	
LNAV/VNAV DA	1635-1 ¹ / ₄		352 (400-1 ¹ / ₄)	
LNAV MDA	1720-1	437 (500-1)	1720-1 ¹ / ₄	437 (500-1 ¹ / ₄)
CIRCLING	1880-1	591 (600-1)	1880-1 ¹ / ₂	1940-2
			591 (600-1 ¹ / ₂)	651 (700-2)

DALLAS, GEORGIA
Orig 09071

33° 55'N-84° 57'W DALLAS/PAULDING COUNTY RGNL (PUJ)
RNAV (GPS) RWY 31