

RNAV (GPS) RWY 13

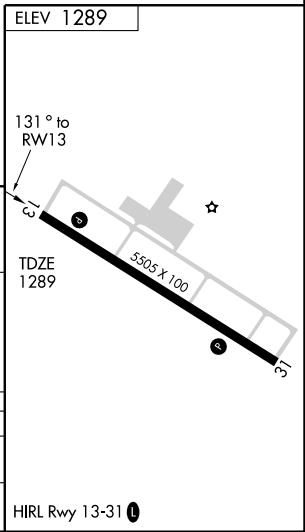
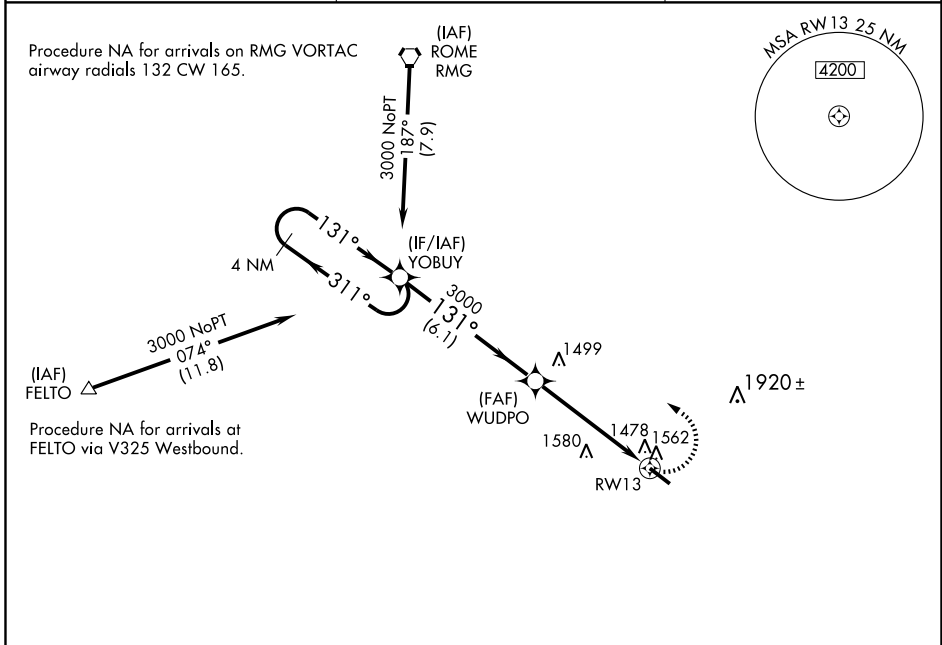
DALLAS/PAULDING COUNTY RGNL (PUJ)

APP CRS 131°	Rwy Idg TDZE Apt Elev	5505 1289 1289
------------------------	-----------------------------	---

▼ DME/DME RNP-0.3 NA. Visibility reduction by helicopters NA. When local altimeter setting not received, use Cartersville altimeter setting and increase all MDA 120 feet. Increase LNAV Cat. C and D visibility ¼ mile, Circling Cat. C and D visibility ½ mile.

MISSED APPROACH: Climbing left turn to 3000 direct YOBUY and hold.

AWOS-3 126.225	ATLANTA APP CON 121.0 268.7	UNICOM 123.075 (CTAF)
--------------------------	---------------------------------------	---------------------------------



CATEGORY	A	B	C	D
LNAV MDA	1820-1	531 (600-1)	1820-1½ 531 (600-1½)	1820-1¾ 531 (600-1¾)
CIRCLING	1880-1	591 (600-1)	1880-1½ 591 (600-1½)	1940-2 651 (700-2)

RNAV (GPS) RWY 13

SE-4, 22 OCT 2009 to 19 NOV 2009

SE-4, 22 OCT 2009 to 19 NOV 2009