

CLEWISTON, FLORIDA

AL-10367 (FAA)

RNAV (GPS) RWY 31

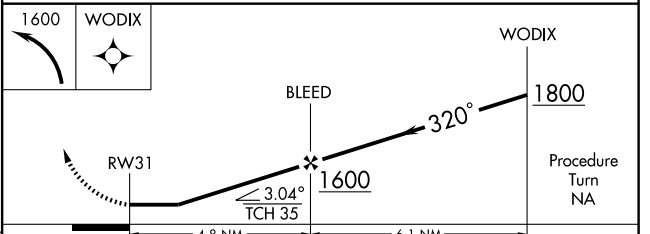
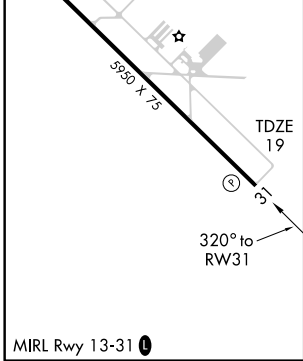
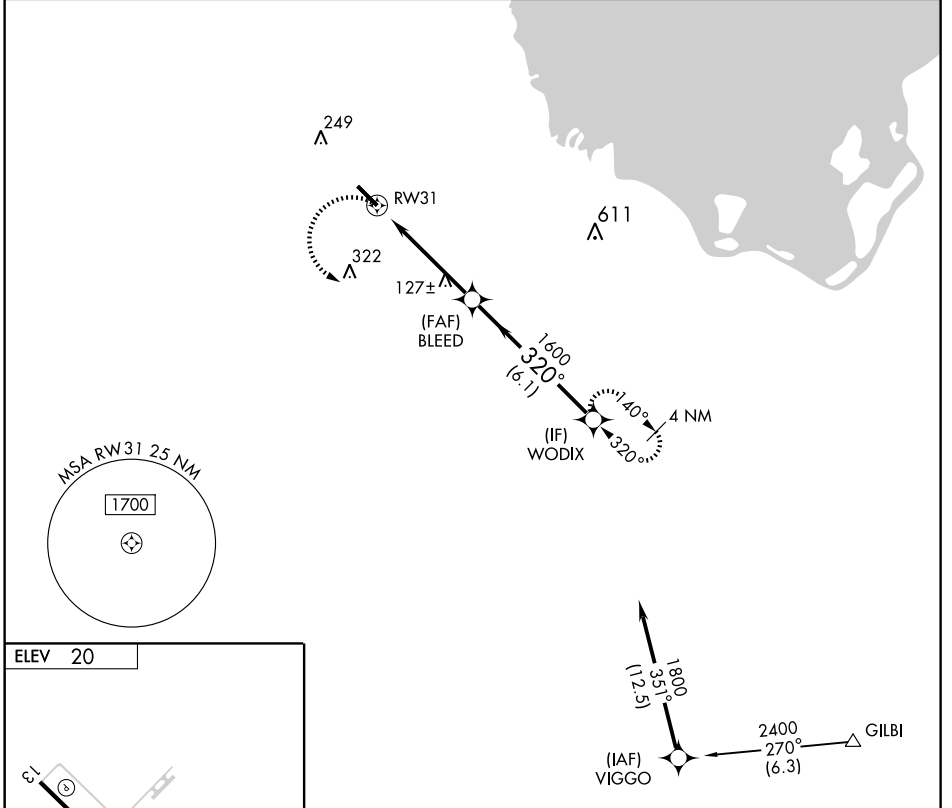
CLEWISTON / AIRGLADES (2IS)

APP CRS	Rwy Idg	5950
320°	TDZE	19
	Apt Elev	20

▼ DME/DME RNP-0.3 NA. Procedure NA at night.
 Visibility reduction by helicopters NA.
▲ NA Use Immokalee altimeter setting, when not received, use Okeechobee County altimeter setting: increase all MDA 20 feet and LNAV visibility Cat. D ¼ mile.

MISSED APPROACH: Climbing left turn to 1600 direct WODIX and hold.

IMMOKALEE AWOS-3 118.525	MIAMI CENTER 132.45 307.1	UNICOM 123.05 (CTAF) 0
------------------------------------	-------------------------------------	----------------------------------



CATEGORY	A	B	C	D
LNAV MDA	440-1	421 (500-1)	440-1¼	421 (500-1¼)
CIRCLING	500-1	480 (500-1)	500-1½ 480 (500-1½)	680-2 660 (700-2)

CLEWISTON, FLORIDA
 Orig 09099

26° 44'N-81° 03'W

CLEWISTON / AIRGLADES (2IS) RNAV (GPS) RWY 31

SE-3, 22 OCT 2009 to 19 NOV 2009

SE-3, 22 OCT 2009 to 19 NOV 2009