

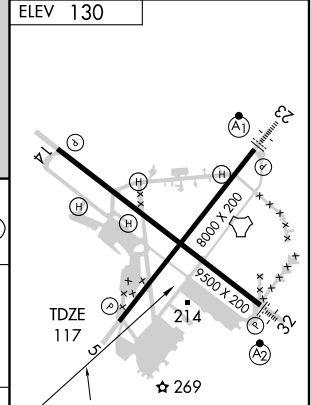
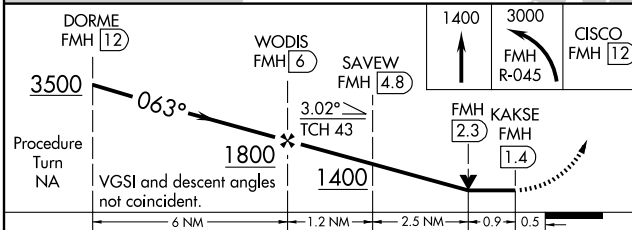
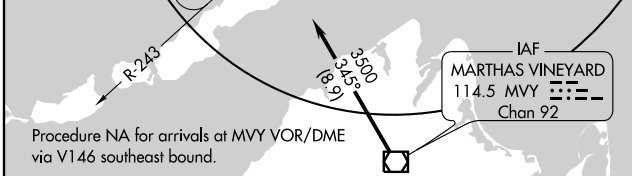
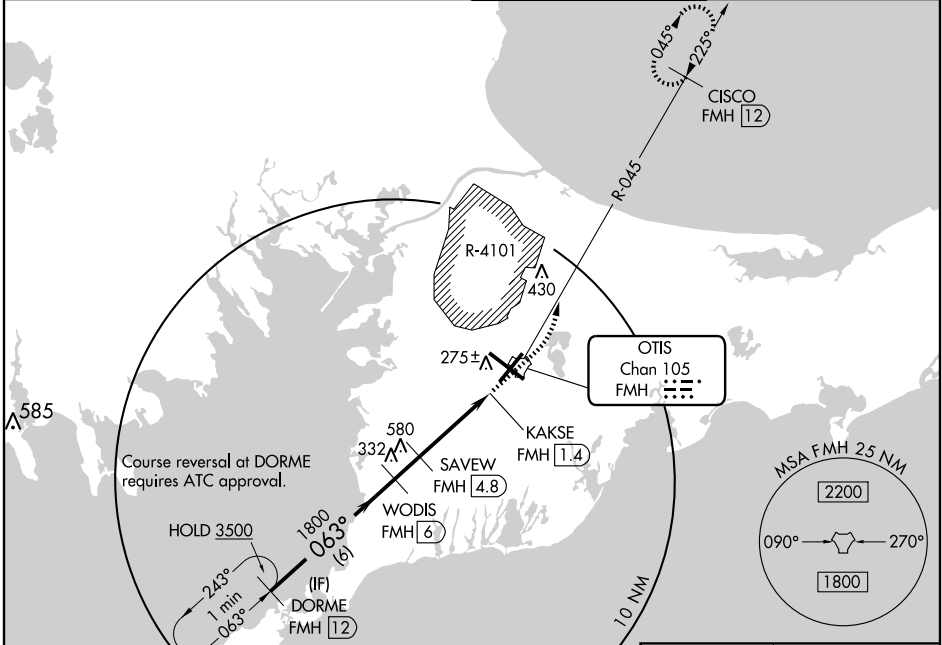
TACAN RWY 5

FALMOUTH/ CAPE COD COAST GUARD AIR STATION (FMH)

TACAN FMH Chan 105	APP CRS 063°	Rwy Idg TDZE Apt Elev	8000 117 130
------------------------------	------------------------	-----------------------------	---

Circling NA NE of Rwy 14 and NW of Rwy 23. MISSED APPROACH: Climb to 1400 then climbing left turn to 3000 via FMH TACAN R-045 to CISCO/12 DME and hold.

ATIS ★ 120.475 236.825	CAPE APP CON 118.2 284.6	COAST GUARD TOWER 121.0 291.1	GND CON 124.15 275.8
----------------------------------	------------------------------------	---	--------------------------------



CATEGORY	A	B	C	D
S-5	540-1 423 (500-1)		540-1¼ 423 (500-1¼)	
CIRCLING	580-1 450 (500-1)		580-1½ 450 (500-1½)	680-2 550 (600-2)

FAF to MAP 4.6 NM					
Knots	60	90	120	150	180
Min:Sec	4:36	3:04	2:18	1:50	1:32

TACAN RWY 5

NE-1, 22 OCT 2009 to 19 NOV 2009

NE-1, 22 OCT 2009 to 19 NOV 2009