

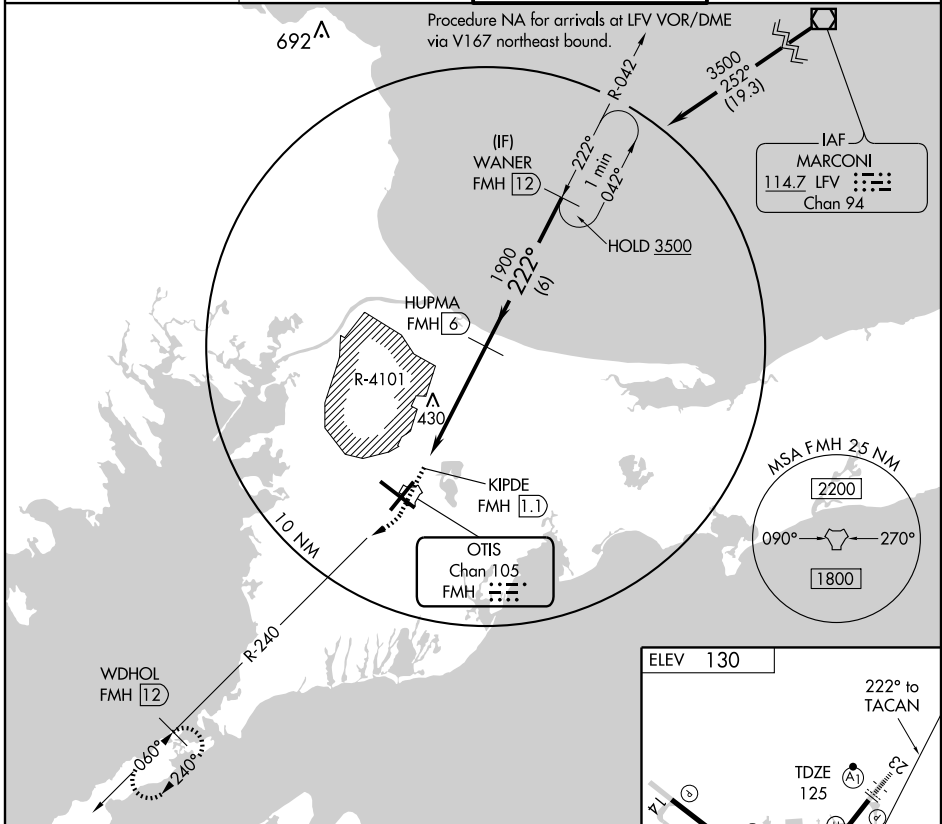
TACAN FMH Chan 105	APP CRS 222°	Rwy Idg TDZE Apt Elev	8000 125 130
------------------------------	------------------------	-----------------------------	---

TACAN RWY 23

FALMOUTH/ CAPE COD COAST GUARD AIR STATION (F/MH)

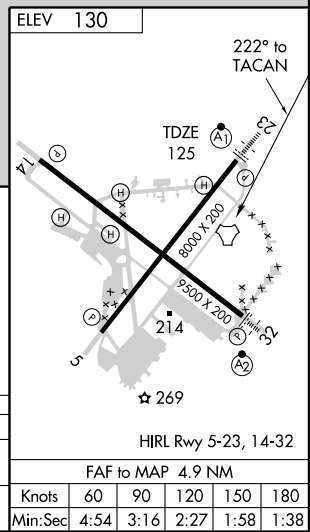
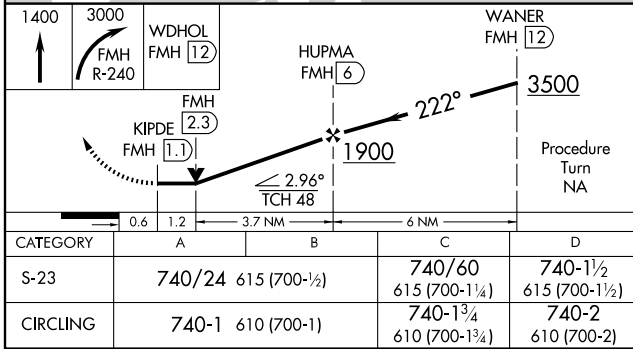
Circling NA NE of Rwy 14 and NW of Rwy 23.	ALSF-1 	MISSED APPROACH: Climb to 1400 then climbing right turn to 3000 via FMH TACAN R-240 to WDHOL/FMH 12 DME and hold.
--	------------	---

ATIS ★ 120.475 236.825	CAPE APP CON 118.2 284.6	COAST GUARD TOWER 121.0 291.1	GND CON 124.15 275.8
----------------------------------	------------------------------------	---	--------------------------------



NE-1, 22 OCT 2009 to 19 NOV 2009

NE-1, 22 OCT 2009 to 19 NOV 2009



TACAN RWY 23