

LOC I-BNX <b>109.9</b>	APP CRS <b>322°</b>	Rwy ldg TDZE Apt Elev	<b>9500</b> <b>117</b> <b>130</b>
---------------------------	------------------------	-----------------------------	---

# ILS or LOC RWY 32

FALMOUTH/ CAPE COD COAST GUARD AIR STATION (F'MH)

Inoperative table does not apply to S-LOC 32 Cat C.  
Circling NA NE of Rwy 14 and NW of Rwy 23.

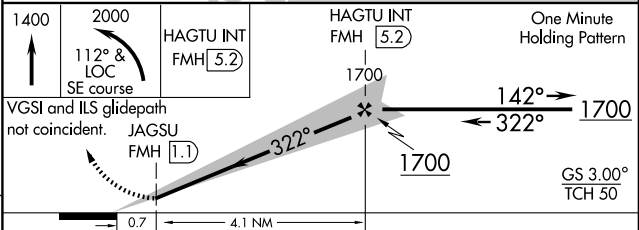
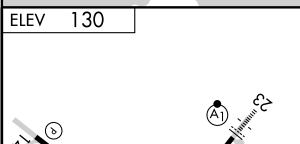
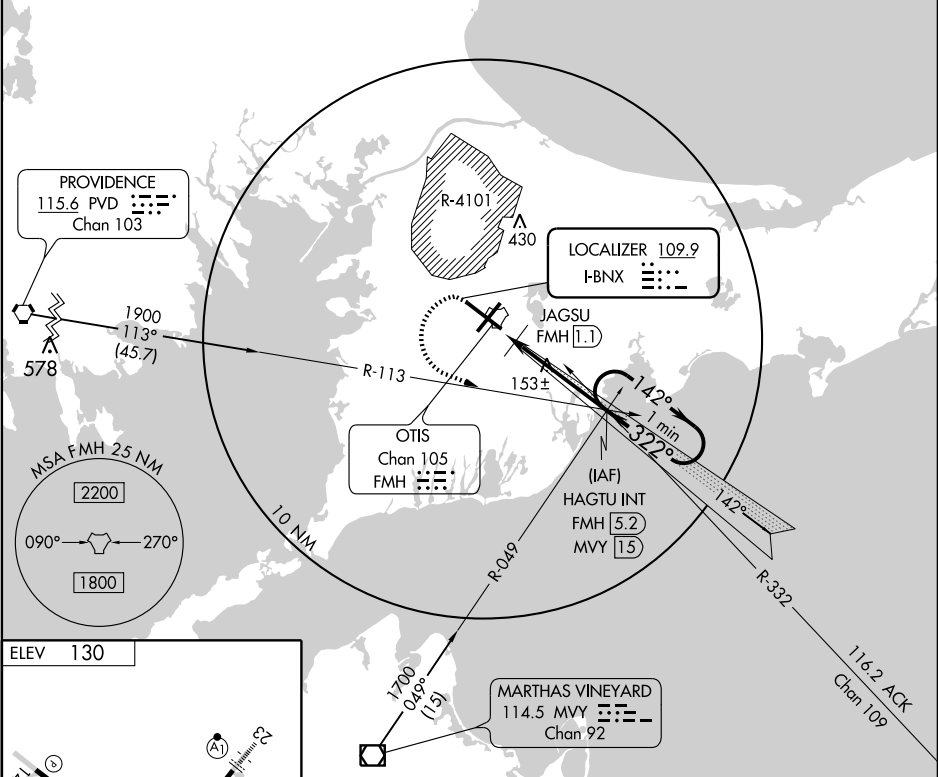


MISSED APPROACH: Climb to 1400 then climbing left turn to 2000 via heading 112° and I-BNX SE course to HAGTU INT/FMH 5.2 DME and hold.

ATIS ★ <b>120.475 236.825</b>	CAPE APP CON <b>118.2 284.6</b>	COAST GUARD TOWER <b>121.0 291.1</b>	GND CON <b>124.15 275.8</b>
----------------------------------	------------------------------------	---	--------------------------------

NE-1, 22 OCT 2009 to 19 NOV 2009

NE-1, 22 OCT 2009 to 19 NOV 2009



HIRL Rwy 5-23, 14-32					
FAF to MAP 4.1 NM					
Knots	60	90	120	150	180
Min:Sec	4:06	2:44	2:03	1:38	1:22

CATEGORY	A	B	C	D
S-ILS 32	317- <sup>3</sup> / <sub>4</sub> 200 (200- <sup>3</sup> / <sub>4</sub> )			
S-LOC 32	540- <sup>3</sup> / <sub>4</sub>	423 (500- <sup>3</sup> / <sub>4</sub> )	540-1 <sup>1</sup> / <sub>4</sub>	423 (500-1 <sup>1</sup> / <sub>4</sub> )
CIRCLING	580-1	450 (500-1)	580-1 <sup>1</sup> / <sub>2</sub>	680-2 450 (500-1 <sup>1</sup> / <sub>2</sub> ) 550 (600-2)