

FALMOUTH, MASSACHUSETTS

AL-10362 (FAA)

LOC I-FMH <b>110.1</b>	APP CRS <b>234°</b>	Rwy Idg <b>8000</b>
		TDZE <b>125</b>
		Apt Elev <b>130</b>

# COPTER ILS or LOC/DME RWY 23

FALMOUTH/ CAPE COD COAST GUARD AIR STATION (FMH)

**▲ NA** TACAN required. United States Coast Guard use only.  
For inoperative ALSF-1, increase S-ILS-23 and S-LOC 23 visibility to RVR 2400. DME from FMH TACAN.  
Simultaneous reception of I-FMH and FMH DME required.

**ALSF-1**  
 MISSED APPROACH: Climb to 1600 via FMH R-240 to WARIP/FMH 7 DME/RADAR and hold.

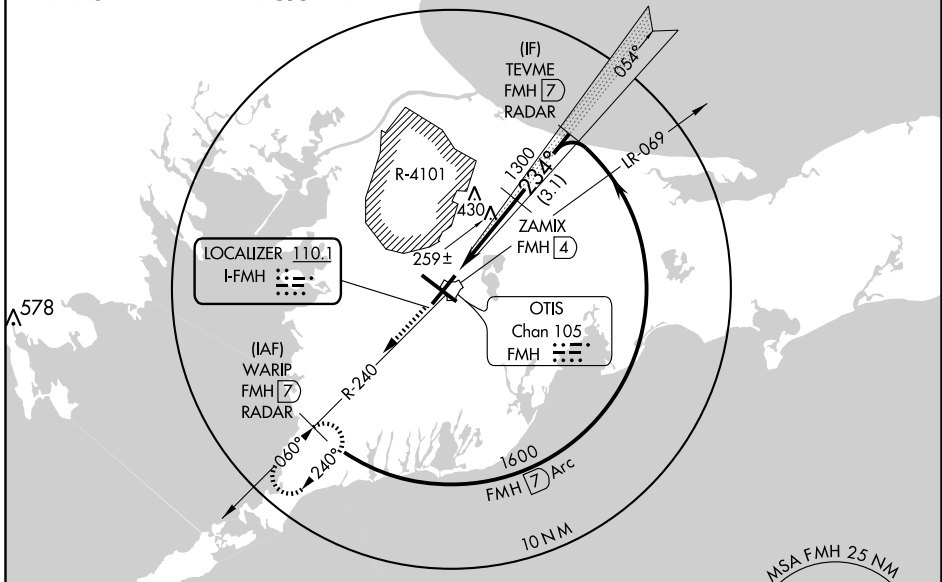
ATIS ★  
**120.475 236.825**

CAPE APP CON  
**118.2 284.6**

COAST GUARD TOWER  
**121.0 291.1**

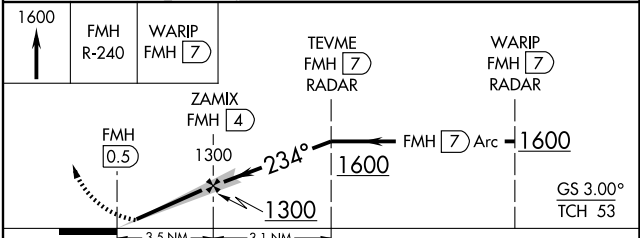
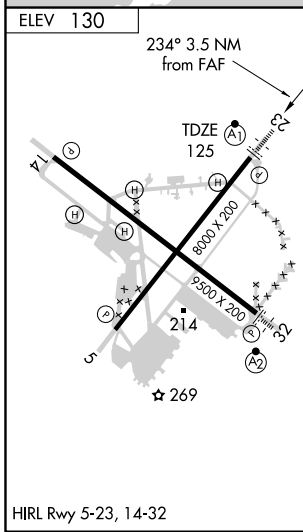
GND CON  
**124.15 275.8**

## DME or RADAR REQUIRED



NE-1, 22 OCT 2009 to 19 NOV 2009

NE-1, 22 OCT 2009 to 19 NOV 2009



CATEGORY	COPTER		
S-ILS 23	225/12	100 (100-¼)	
S-LOC 23	520/12	395 (400-¼)	

FALMOUTH, MASSACHUSETTS  
Orig 09183

41°39'N-70°31'W

# FALMOUTH/ CAPE COD COAST GUARD AIR STATION (FMH) COPTER ILS or LOC/DME RWY 23