

RNAV (GPS) RWY 20

MOREHEAD-ROWAN COUNTY CLYDE A THOMAS RGNL (M97)

WAAS CH 78209 W20A	APP CRS 206°	Rwy Idg TDZE Apt Elev	5500 1020 1028
--	------------------------	-----------------------------	---

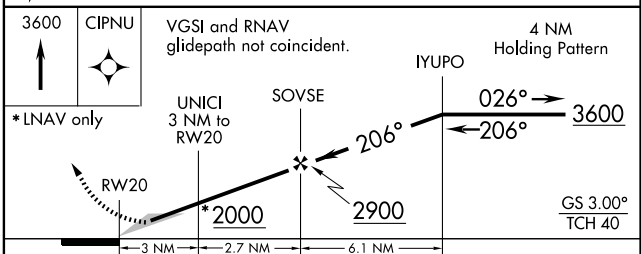
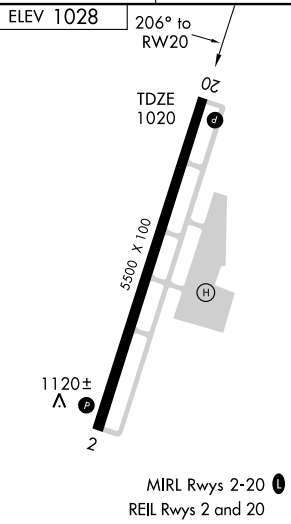
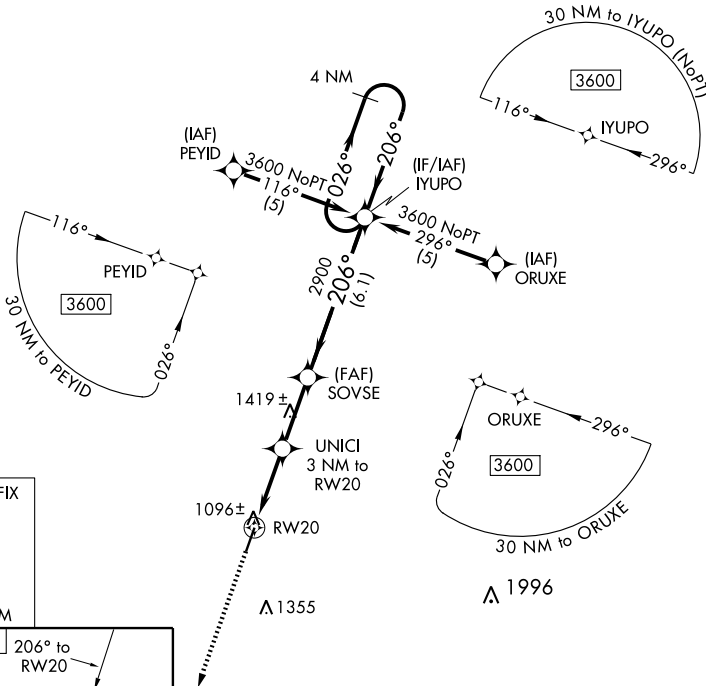
NA Baro-VNAV NA. DME/DME RNP-0.3 NA. Use Mount Sterling altimeter setting; when not received use Flemingsburg altimeter setting and increase all DA 15 feet, all MDA 20 feet, and LPV all Cats. visibility ¼ mile.

MISSED APPROACH: Climb to 3600 direct CIPNU and hold.

INDIANAPOLIS CENTER 124.225 360.725	UNICOM 122.8 (CTAF)
---	-------------------------------

SE-1, 22 OCT 2009 to 19 NOV 2009

SE-1, 22 OCT 2009 to 19 NOV 2009



CATEGORY	A	B	C	D
LPV DA		1387-1¼	367 (400-1¼)	
LNNAV/VNAV DA		1416-1½	396 (400-1½)	
LNNAV MDA	1400-1	380 (400-1)		1400-1¼ 380 (400-1¼)
CIRCLING	1480-1	452 (500-1)	1480-1½ 452 (500-1½)	1580-2 552 (600-2)

RNAV (GPS) RWY 20