

RNAV (GPS) RWY 9

WAYNESBURG/ GREENE COUNTY (WAY)

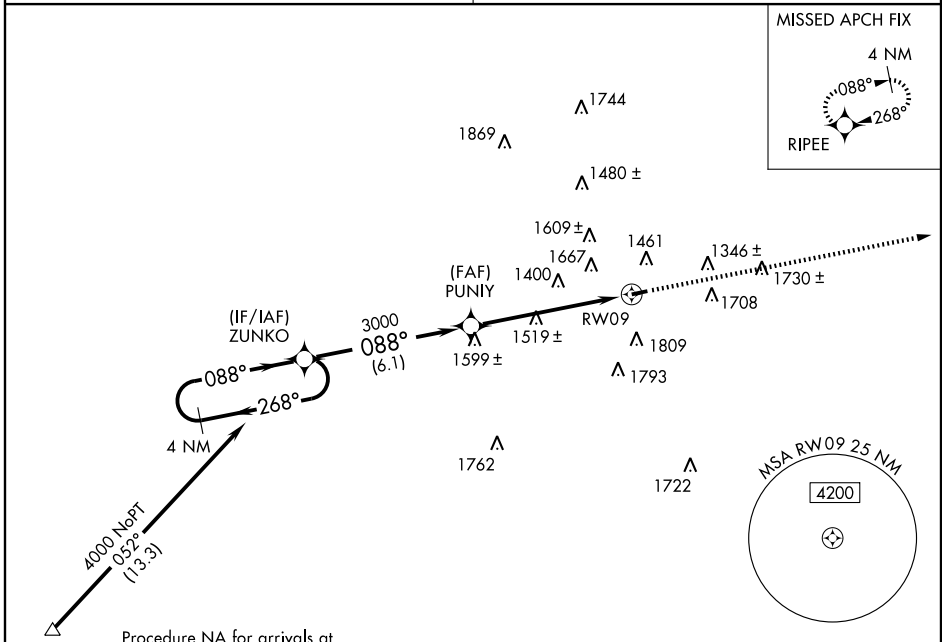
WAAS CH 45806 W09A	APP CRS 088°	Rwy Idg 3500 TDZE 1069 Apt Elev 1069
--	------------------------	---

▼ Use Washington altimeter setting, when not received use Morgantown altimeter setting and increase DAs 15 feet and all MDAs 20 feet.
▲ NA DME/DME RNP-0.3 NA. Procedure NA at night.
 Visibility reduction by helicopters NA.

MISSED APPROACH: Climb to 4000 direct RIPEE and hold.

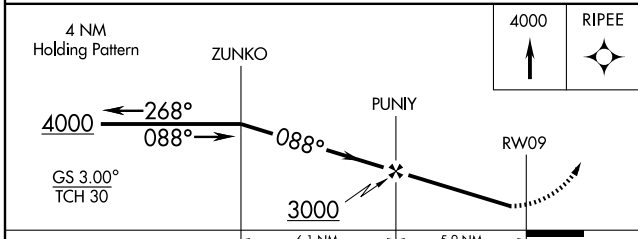
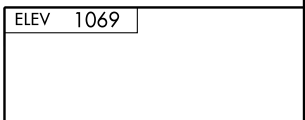
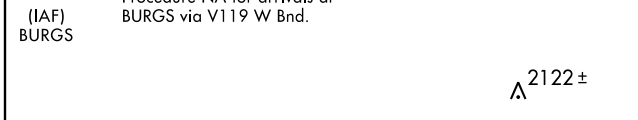
CLEVELAND CENTER
126.95 239.3

UNICOM
122.8 (CTAF)



NE-4, 22 OCT 2009 to 19 NOV 2009

NE-4, 22 OCT 2009 to 19 NOV 2009



CATEGORY	A	B	C	D
LPV DA	1492-1½ 423 (500-1½)			NA
LNVA MDA	1840-1 771 (800-1)	1840-1¼ 771 (800-1¼)	1840-2¼ 771 (800-2¼)	NA
CIRCLING	1880-1 811 (900-1)	2060-1½ 991 (1000-1½)	2060-3 991 (1000-3)	NA

