

RNAV (GPS) RWY 18

INDIANAPOLIS/ HENDRICKS COUNTY-GORDON GRAHAM FIELD (2R2)

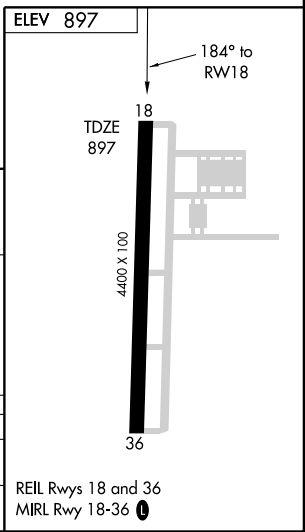
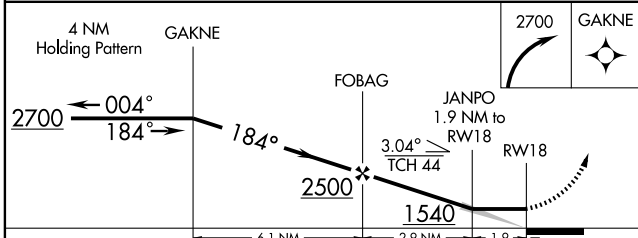
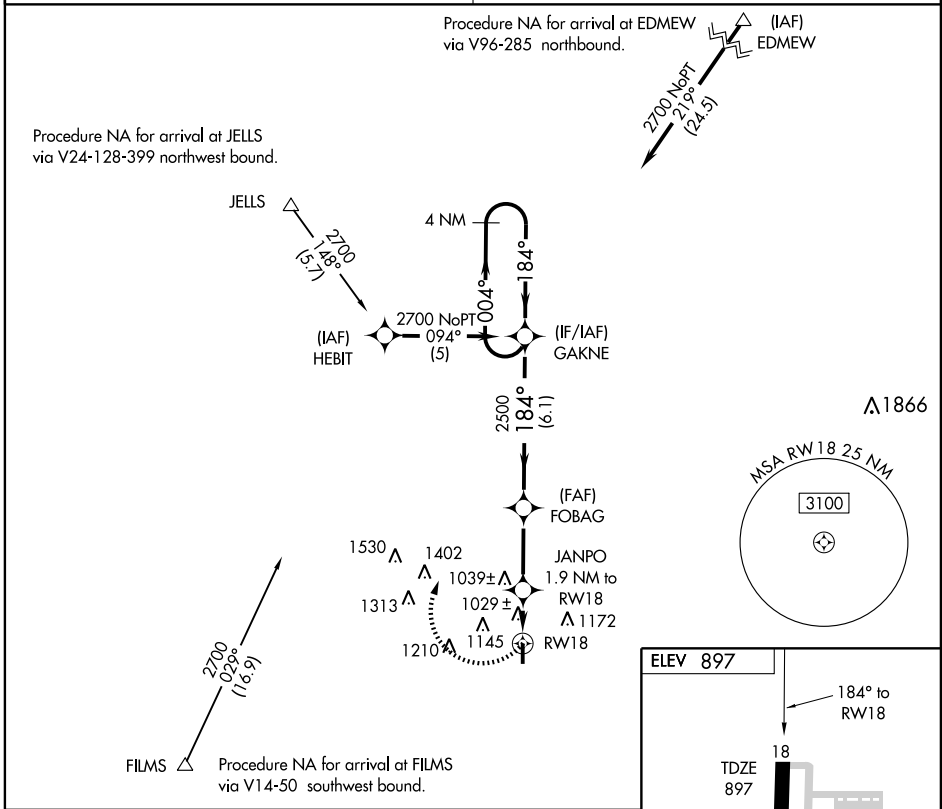
APP CRS 184°	Rwy Idg 4400
	TDZE 897
	Apt Elev 897

NA DME/DME RNP-0.3 NA.
Use Indianapolis Intl altimeter setting.

MISSED APPROACH: Climbing right turn to 2700 direct GAKNE and hold.

INDIANAPOLIS APP CON
121.1

UNICOM
122.7 (CTAF)



CATEGORY	A	B	C	D
LNAV MDA	1320-1	423 (500-1)	1320-1¼ 423 (500-1¼)	NA
CIRCLING	1380-1 483 (500-1)	1480-1 583 (600-1)	1480-1½ 583 (600-1½)	NA

RNAV (GPS) RWY 18

EC-2, 22 OCT 2009 to 19 NOV 2009

EC-2, 22 OCT 2009 to 19 NOV 2009