

RNAV (GPS) RWY 8

PHILIPPI/ BARBOUR COUNTY RGNL (79D)

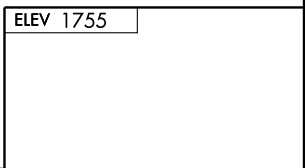
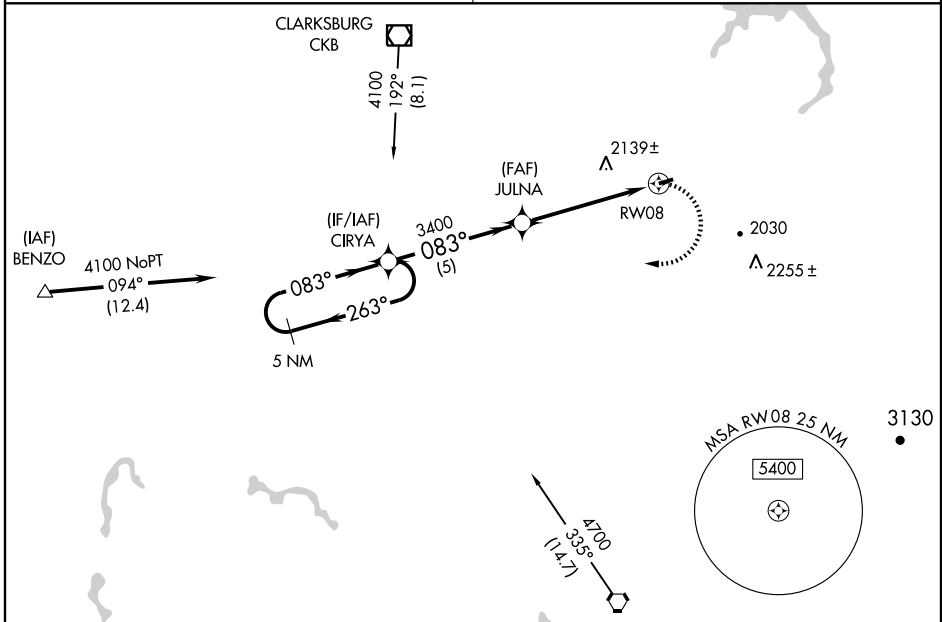
APP CRS 083°	Rwy Idg 3135
	TDZE 1755
	Apt Elev 1755

▽ DME/DME RNP-0.3 NA. Procedure NA at night.
 Visibility reduction by helicopters NA.
△ NA Use Clarksburg altimeter setting, when not received,
 use Buckhannon altimeter setting and increase LNAV Cat A/B MDA 20 feet.

MISSED APPROACH: Climbing right
 turn to 4100 direct CIRYA and hold.

CLARKSBURG APP CON
121.15 269.375

CTAF
122.9



5 NM Holding Pattern	4100 CIRYA			
VGSI and descent angles not coincident.	083° to RWY 08			
	3275 X 60			
	TDZE 1755			
	ELEV 1755			

CATEGORY	A	B	C	D
LNAV MDA	2460-1	705 (800-1)	NA	
CIRCLING	2520-1 765 (800-1)	2520-1¼ 765 (800-1¼)	NA	

REIL Rwy 8 **①**
 MIRL Rwy 8-26 **①**

NE-4, 22 OCT 2009 to 19 NOV 2009

NE-4, 22 OCT 2009 to 19 NOV 2009