

# RNAV (GPS) RWY 34

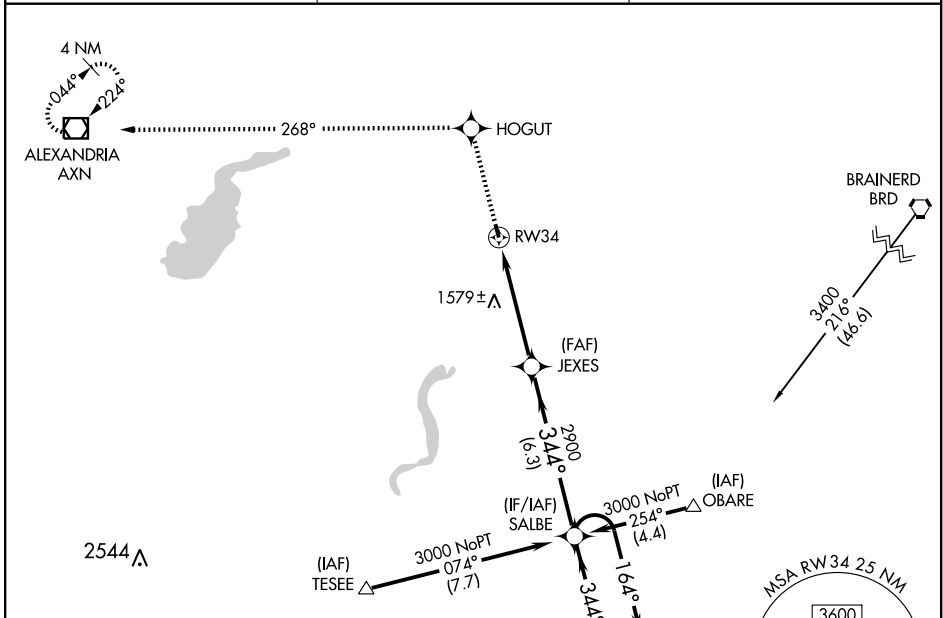
LONG PRAIRIE/TODD FIELD (14Y)

APP CRS <b>344°</b>	Rwy Idg TDZE Apt Elev	<b>3000</b> <b>1332</b> <b>1333</b>
------------------------	-----------------------------	---

▼ Procedure NA at night.  
 ▲ NA DME/DME RNP- 0.3 NA.  
 Visibility reduction by helicopters NA.  
 When local altimeter setting not received, use Alexandria altimeter setting.

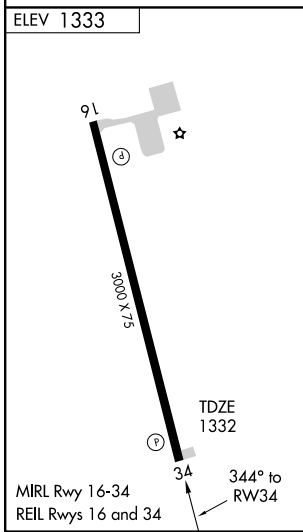
MISSED APPROACH: Climb to 3000 direct HOGUT and via 268° track to ALEXANDRIA VOR/DME and hold.

AWOS-3 <b>118.650</b>	MINNEAPOLIS CENTER <b>126.1 269.2</b>	CTAF <b>122.9</b>
--------------------------	--	----------------------



NC-1, 22 OCT 2009 to 19 NOV 2009

NC-1, 22 OCT 2009 to 19 NOV 2009



Procedure NA for arrivals at OBARE via V2 southeast bound.  
 Procedure NA for arrival on BRD VORTAC airway radials 156 CW 171.

3000	HOGUT	268° track	AXN	SALBE	4 NM Holding Pattern
RW34		JEXES		3000	
≤ 3.04° TCH 40		2900		164° →	
← 344°		344°		← 344°	
4.8 NM		6.3 NM		VGS1 and descent angles not coincident.	
CATEGORY	A	B	C	D	
LNAV MDA	1900-1	568 (600-1)	1900-1½ 568 (600-1½)	NA	
CIRCLING	1900-1	567 (600-1)	1900-1½ 567 (600-1½)	NA	