

WALDEN, COLORADO

AL-10349 (FAA)

APP CRS 152°	Rwy Idg TDZE Apt Elev	N/A N/A 8153
------------------------	-----------------------------	---

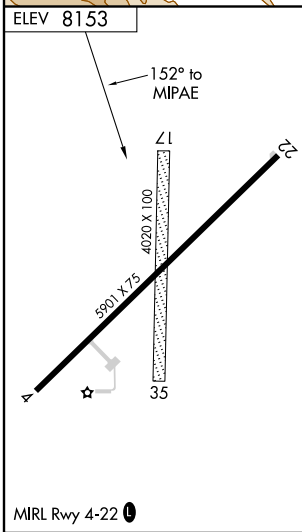
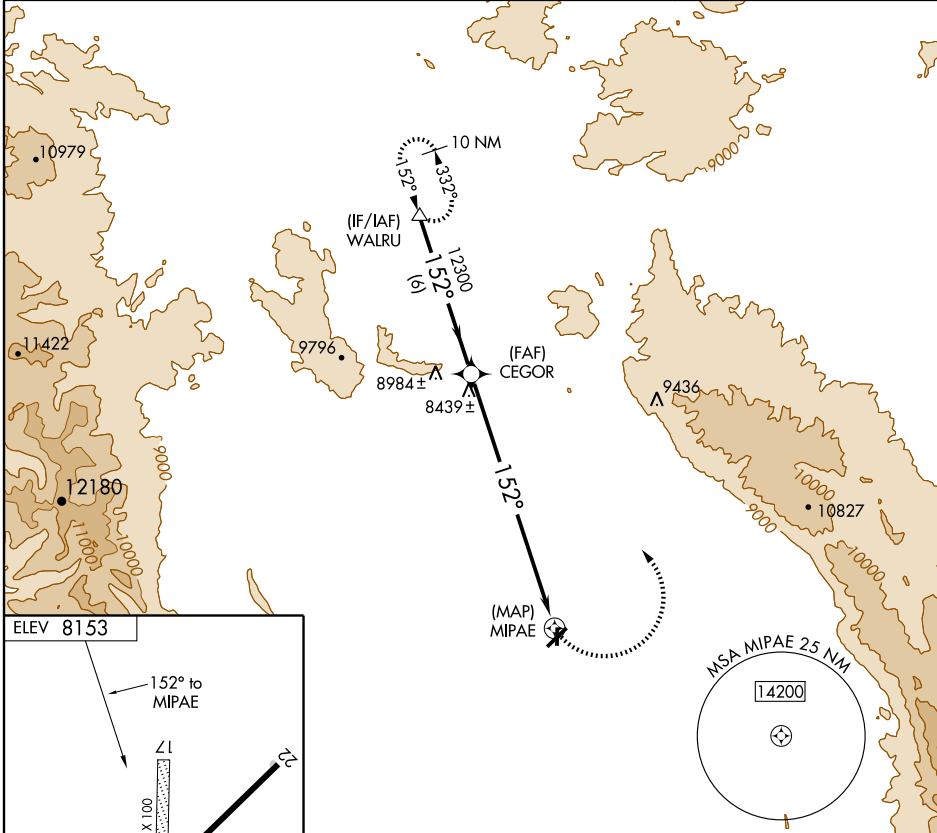
RNAV (GPS)-A

WALDEN-JACKSON COUNTY (33V)

▼ When local altimeter setting not received, procedure NA.
▲ NA Circling NA southeast of Rwy 4-22.
 Circling to Rwy 17 and 35 NA.
 DME/DME RNP-0.3 NA.

MISSED APPROACH: Climbing left turn to 14200 direct WALRU and hold, continue climb-in-hold to 14200.

AWOS-3 118.625	DENVER CENTER 126.5 371.85	CTAF 122.9
--------------------------	--------------------------------------	----------------------



	WALRU	CEGOR	MIPAE
	14200	12300	14200
Procedure Turn NA	6 NM	9.6 NM	
CATEGORY	A	B	C
CIRCLING	8880-1	727 (800-1)	8880-2 727 (800-2)
			NA

WALDEN, COLORADO
 Orig 08157

40°45' N-106°16' W

RNAV (GPS)-A

SW-1, 22 OCT 2009 to 19 NOV 2009

SW-1, 22 OCT 2009 to 19 NOV 2009