

RNAV (GPS) RWY 4

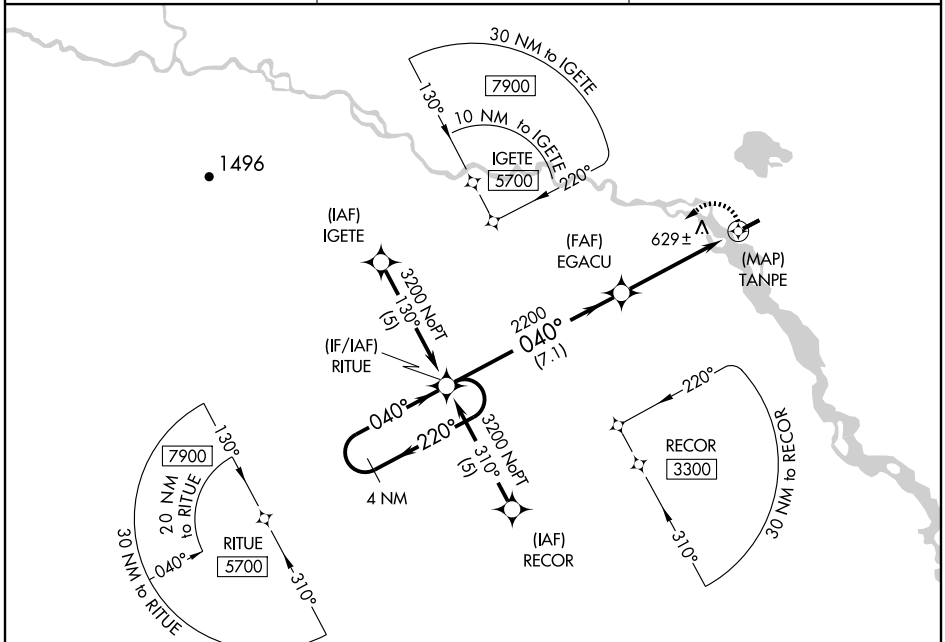
VENETIE (VEE) (PAVE)

APP CRS	Rwy Idg	4000
040°	TDZE	572
	Apt Elev	574

▼ Use Fort Yukon altimeter setting; when not received procedure NA. Procedure NA at night.
 ▲ NA DME/DME RNP-0.3 NA.

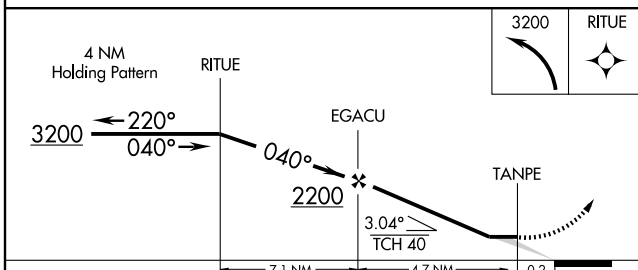
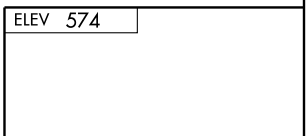
MISSED APPROACH: Climbing left turn to 3200 direct RITUE and hold.

FORT YUKON AWOS-3 125.8	ANCHORAGE CENTER 135.0 284.7	CTAF 122.9
-----------------------------------	--	----------------------



AK, 22 OCT 2009 to 17 DEC 2009

AK, 22 OCT 2009 to 17 DEC 2009



CATEGORY	A	B	C	D
LNVA MDA	1020-1	448 (500-1)		NA
CIRCLING	1120-1	546 (600-1)		NA

