

RNAV (GPS) RWY 7

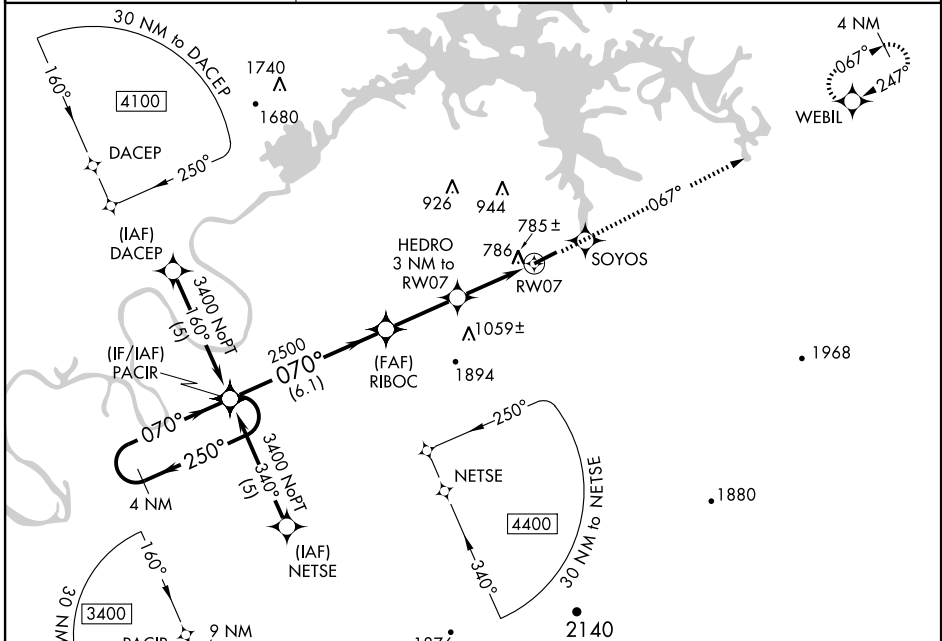
CENTRE-PIEDMONT CHEROKEE COUNTY RGNL (PYP)

APP CRS	Rwy Idg	5500
070°	TDZE	585
	Apt Elev	596

NA DME/DME RNP-0.3 NA. Procedure NA at night. Visibility reduction by helicopters NA. Use Gadsden altimeter setting; when not received use Anniston altimeter setting and increase all MDAs 20 feet.

MISSED APPROACH: Climb to 3400 direct SOYOS and via 067° track to WEBIL and hold.

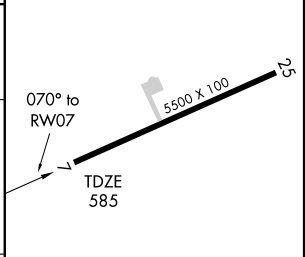
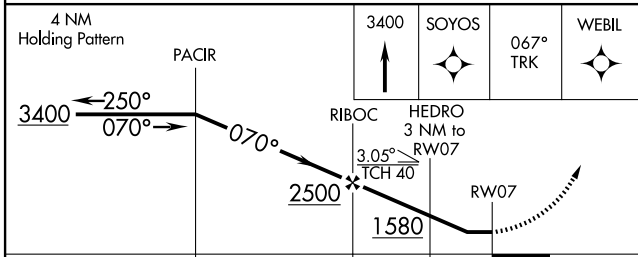
GADSDEN AWOS-3 127.825	ATLANTA APP CON 133.8 353.7	CTAF 122.9
----------------------------------	---------------------------------------	----------------------



SE-4, 22 OCT 2009 to 19 NOV 2009

SE-4, 22 OCT 2009 to 19 NOV 2009

ELEV	596
------	------------



CATEGORY	A	B	C	D
RNAV MDA	1100-1 515 (600-1)		1100-1½ 515 (600-1½)	1100-1¾ 515 (600-1¾)
CIRCLING	1160-1 564 (600-1)		1160-1½ 564 (600-1½)	1160-2 564 (600-2)

MIRL Rwy 7-25