

RNAV (GPS)-A

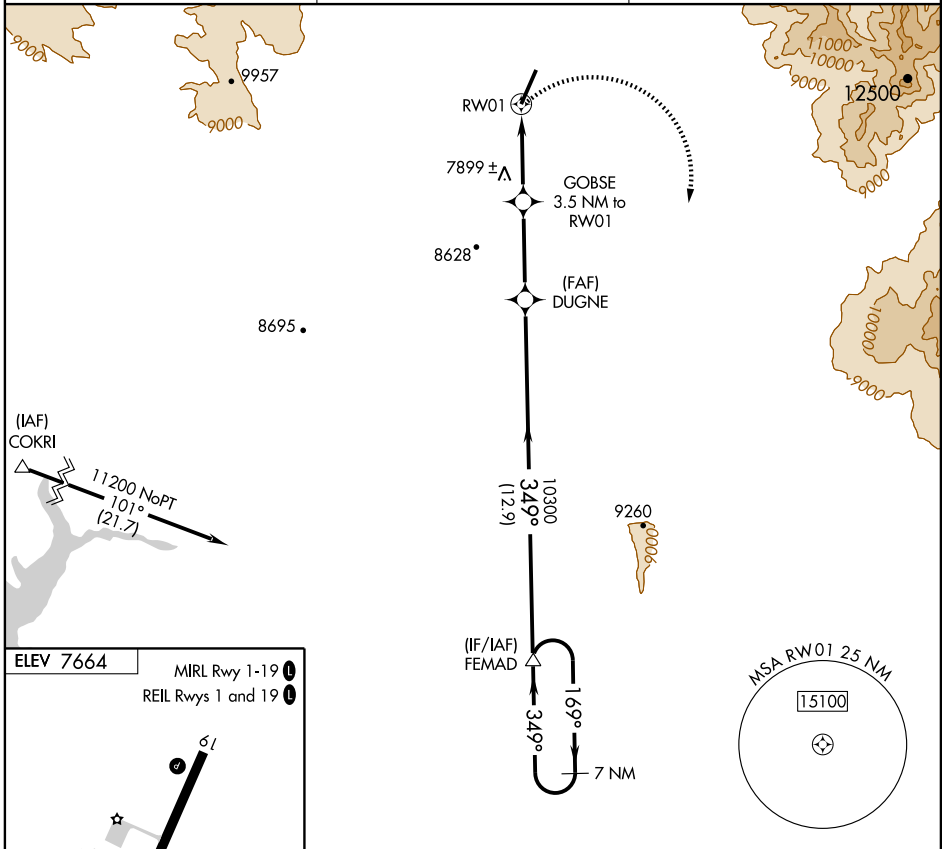
PAGOSA SPRINGS/STEVENS FIELD (PSO)

APP CRS 349°	Rwy Idg TDZE Apt Elev	N/A N/A 7664
------------------------	-----------------------------	---

▼ Circling to Rwy 19 NA at night. DME/DME RNP-0.3 NA.
 ▲ When local altimeter setting not received, use Durango altimeter setting: increase all MDAs 220 feet and visibility Cat. A ½ mile, Cat. B ½ mile, Cat. C 1 mile.

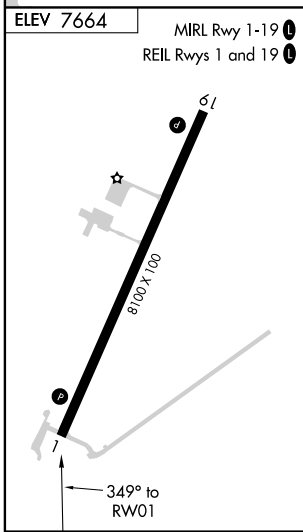
MISSED APPROACH: Climbing right turn to 11 200 direct FEMAD and hold.

AWOS-3 127.175	DENVER CENTER 118.575 348.7	UNICOM 122.7 (CTAF) 0
--------------------------	---------------------------------------	---------------------------------



SW-1, 22 OCT 2009 to 19 NOV 2009

SW-1, 22 OCT 2009 to 19 NOV 2009



11 200	FEMAD	7 NM Holding Pattern		
CATEGORY	A	B	C	D
CIRCLING	8400-1	736 (800-1)	8400-2 736 (800-2)	NA