

RNAV (GPS) RWY 32

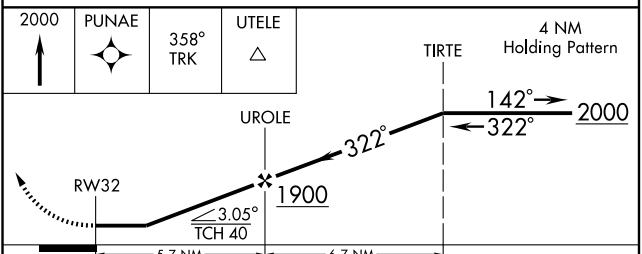
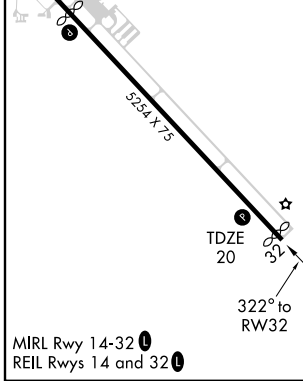
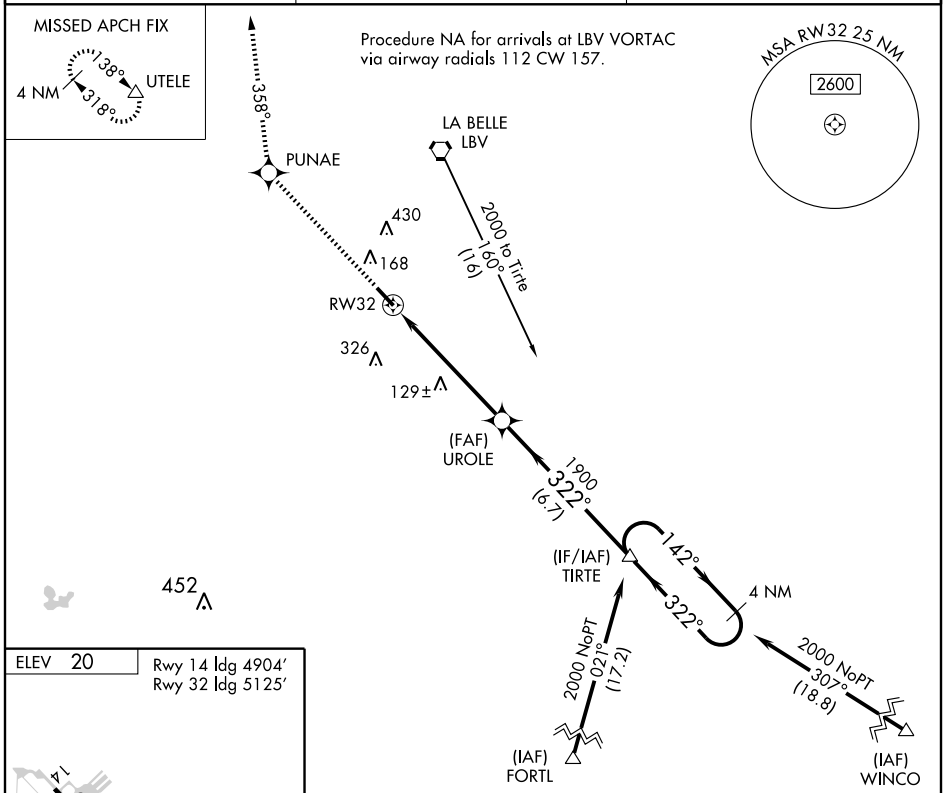
LA BELLE MUNI (X14)

APP CRS 322°	Rwy ldg 5125
	TDZE 20
	Apt Elev 20

NA DME/DME RNP-0.3 NA. Visibility reduction by helicopters NA. Use Southwest Florida Intl altimeter setting; when not received, use Page Field altimeter setting and increase all MDAs 20 feet.

MISSED APPROACH: Climb to 2000 direct PUNAE then via 358° track to UTELE and hold.

SOUTHWEST FLORIDA INTL ASOS 124.65	FORT MYERS APP CON 126.8	UNICOM 122.8 (CTAF) 1
--	------------------------------------	--



CATEGORY	A	B	C	D
LNAV MDA	480-1	460 (500-1)	480-1¼ 460 (500-1¼)	480-1½ 460 (500-1½)
CIRCLING	580-1	560 (600-1)	580-1½ 560 (600-1½)	800-2½ 780 (800-2½)

SE-3, 22 OCT 2009 to 19 NOV 2009

SE-3, 22 OCT 2009 to 19 NOV 2009