

RNAV (GPS) RWY 14

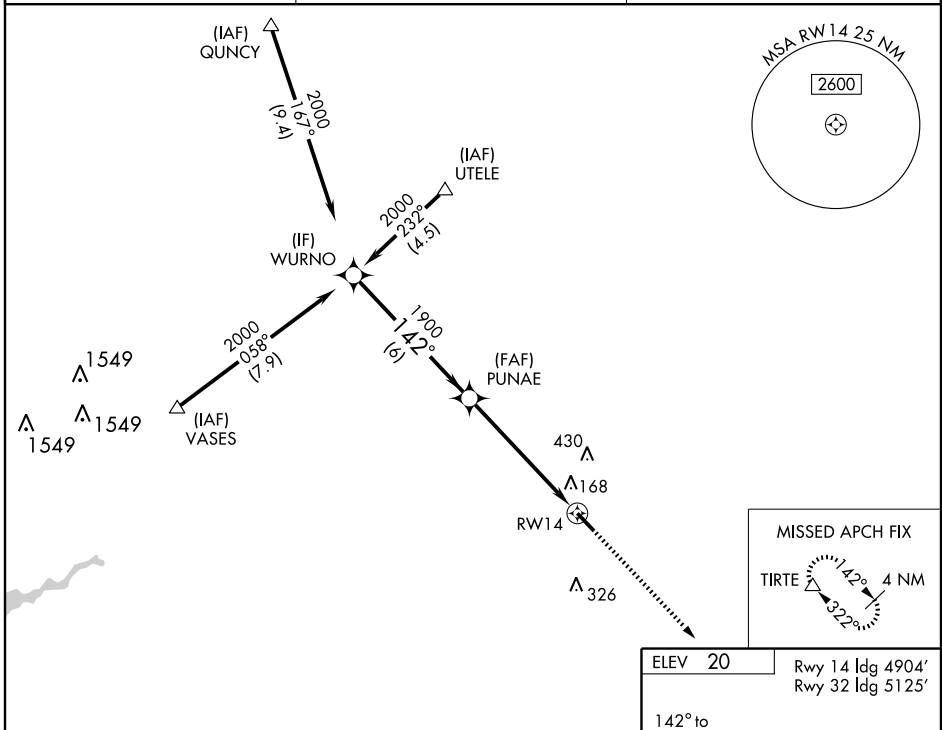
LA BELLE MUNI (X14)

WAAS CH 56406 W14A	APP CRS 142°	Rwy ldg 4904 TDZE 19 Apt Elev 20
--	------------------------	---

Baro-VNAV NA. DME/DME RNP-0.3 NA. Visibility reduction by helicopters NA.
 Use Southwest Florida Intl altimeter setting; when not received, use Page Field altimeter setting and increase all DAs 8 feet, all MDAs 20 feet and LNAV Cat D visibility ¼ mile.

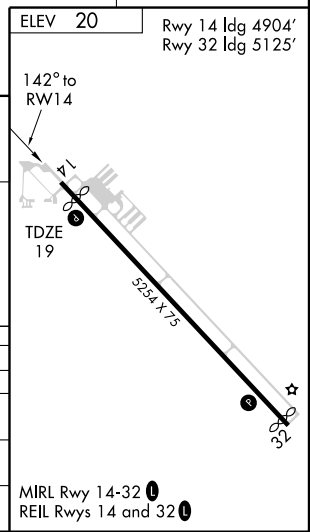
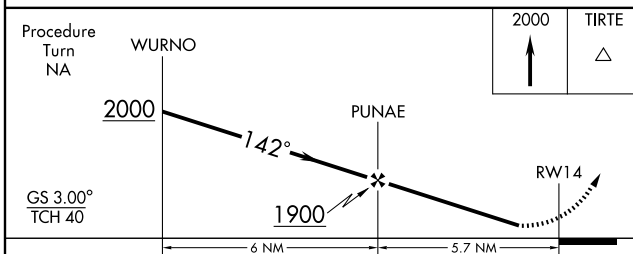
MISSED APPROACH:
 Climb to 2000 direct TIRTE and hold.

SOUTHWEST FLORIDA INTL ASOS 124.65	FORT MYERS APP CON 126.8	UNICOM 122.8 (CTAF) 0
--	------------------------------------	--



SE-3, 22 OCT 2009 to 19 NOV 2009

SE-3, 22 OCT 2009 to 19 NOV 2009



CATEGORY	A	B	C	D
LPV DA	388-1¼		369 (400-1¼)	
LNAV/VNAV DA	565-2		546 (600-2)	
LNAV MDA	520-1	501 (500-1)	520-1½	501 (500-1½)
CIRCLING	580-1	560 (600-1)	580-1½	800-2½ 560 (600-1½) 780 (800-2½)