

WAAS CH 40309 W20A	APP CRS 199°	Rwy Idg TDZE 387 Apt Elev 390	5001
--	------------------------	---	-------------

RNAV (GPS) RWY 20

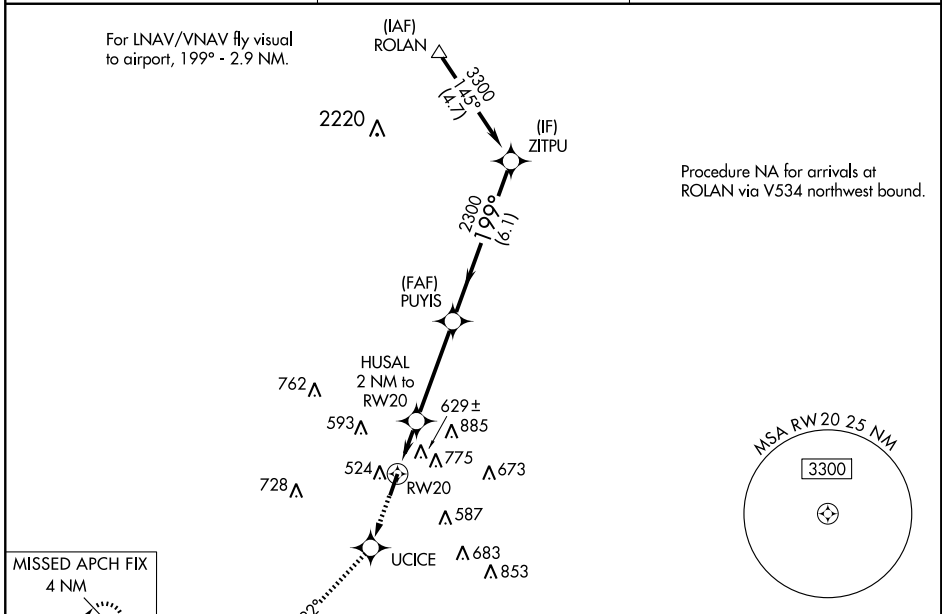
BENTON/ SALINE COUNTY RGNL (SUZ)

▽ Baro-VNAV NA. DME/DME RNP-0.3 NA. Visibility reduction by helicopters NA. Use Little Rock/Adams Field altimeter setting; when not received, use Hot Springs altimeter setting and increase all DA 41 feet and all MDA 60 feet. Increase LPV visibility all Cats ¼ mile, LNAV/VNAV visibility Cat C ¼ mile and LNAV visibility Cat C, D ¼ mile.

△ NA

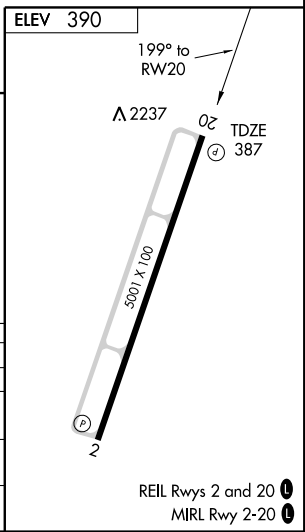
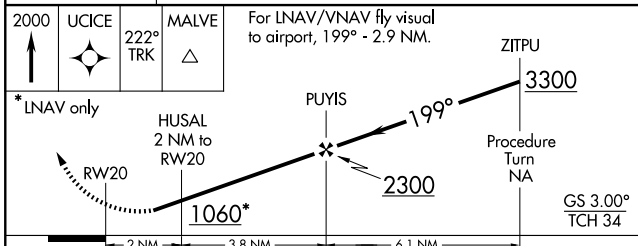
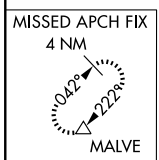
MISSED APPROACH: Climb to 2000 direct UCICE and via 222° track to MALVE and hold.

HOT SPRINGS ASOS 119.925	LITTLE ROCK APP CON 119.5 306.2	UNICOM 122.8 (CTAF) ①
------------------------------------	---	--



SC-1, 22 OCT 2009 to 19 NOV 2009

SC-1, 22 OCT 2009 to 19 NOV 2009



CATEGORY	A	B	C	D
LPV DA	827-1½ 440 (500-1½)			
LNAV/VNAV DA	1330-2	943 (1000-2)	1330-2¾ 943 (1000-2¾)	1330-3 943 (1000-3)
LNAV MDA	960-1	573 (600-1)	960-1½ 573 (600-1½)	960-1¾ 573 (600-1¾)
CIRCLING	1000-1 610 (700-1)	1140-1¼ 750 (800-1¼)	1140-2¼ 750 (800-2¼)	1140-2½ 750 (800-2½)