

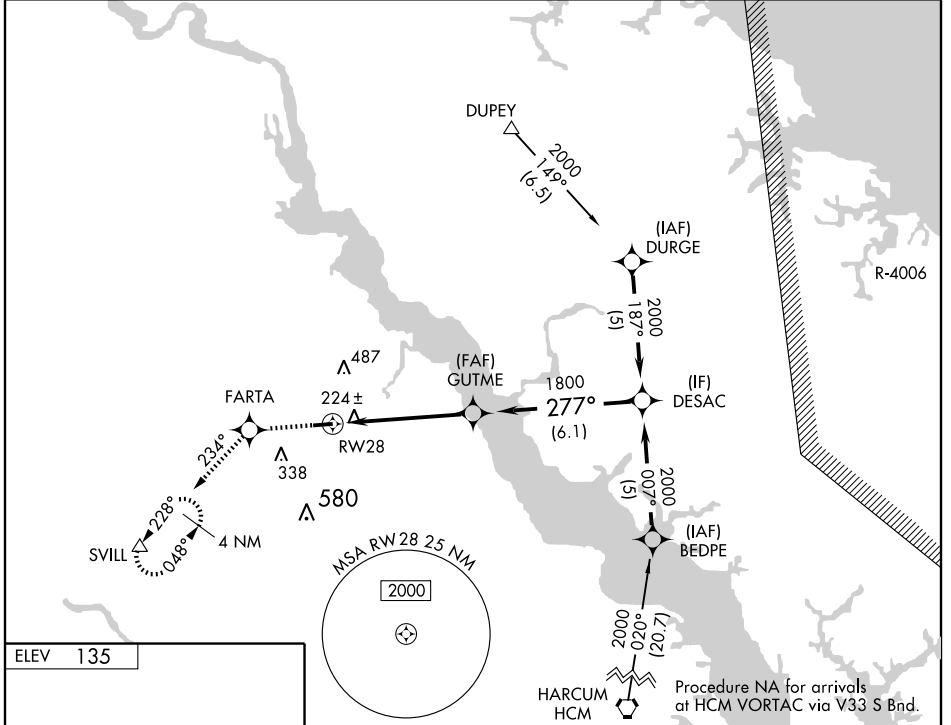
RNAV (GPS) RWY 28
TAPPAHANNOCK-ESSEX COUNTY (XSA)

WAAS CH 99409 W28A	APP CRS 277°	Rwy Idg 4300 TDZE 129 Apt Elev 135
--	------------------------	---

Baro-VNAV and VDP NA when using West Point altimeter setting. When local altimeter setting not received, use West Point altimeter setting and increase all DA 65 feet and all MDA 80 feet, increase LPV and LNAV/VNAV visibilities ¼ mile. For uncompensated Baro-VNAV systems, LNAV/VNAV NA below -15°C(5°F) or above 54°C(130°F). Visibility reduction by helicopters NA. DME/DME RNP-0.3 NA.

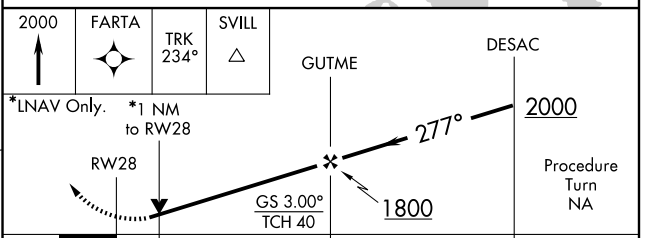
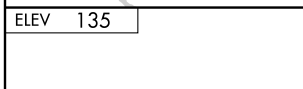
MISSED APPROACH: Climb to 2000 direct FARTA and via 234° track to SVILL and hold.

AWOS-3 125.775	POTOMAC APP CON 126.4 282.375	UNICOM 122.8 (CTAF) 0
--------------------------	---	---------------------------------



NE-3, 22 OCT 2009 to 19 NOV 2009

NE-3, 22 OCT 2009 to 19 NOV 2009



CATEGORY	A	B	C	D
LPV DA	478-1¼	349 (400-1¼)		NA
LNAV/VNAV DA	521-1½	392 (400-1½)		NA
LNAV MDA	480-1	351 (400-1)		NA
CIRCLING	580-1 445 (600-1)	600-1 465 (600-1)	640-1½ 505 (600-1½)	NA

REIL Rwy 10 and 28
MIRL Rwy 10-28 0