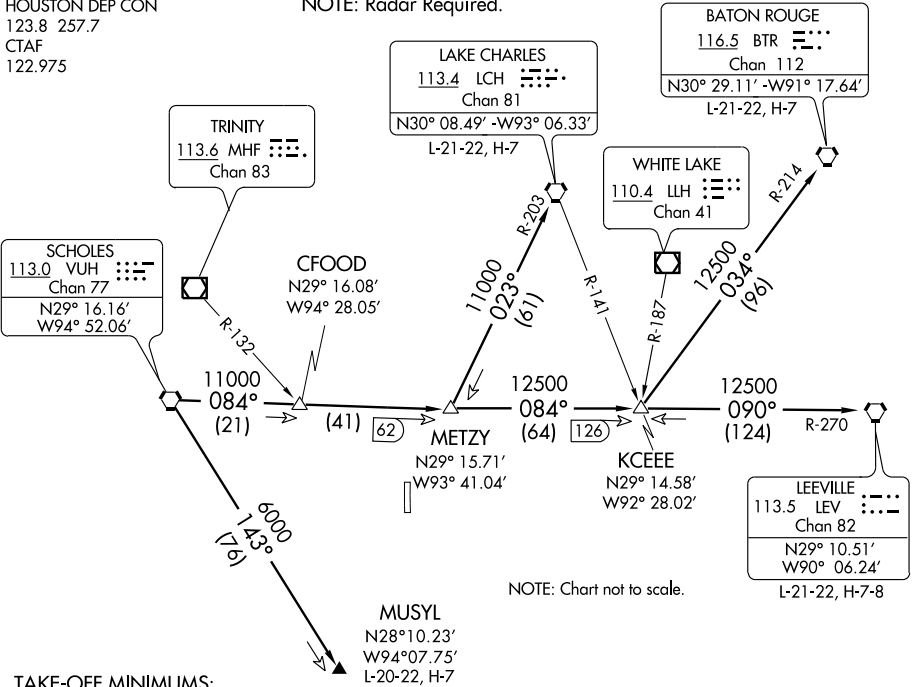


AWOS-A  
122.975  
CLNC DEL  
121.725  
HOUSTON DEP CON  
123.8 257.7  
CTAF  
122.975

NOTE: LCH, BTR, and LEV transitions are ATC assigned only, do not file.  
NOTE: For LCH, BTR, LEV transitions, this procedure requires over water flight not to exceed 35 miles from nearest shoreline.  
NOTE: Radar Required.



TAKE-OFF MINIMUMS:  
Rwy 18, 36 standard.

TAKE-OFF OBSTACLES:

Rwy 36, Power poles from left to right beginning 703' from DER, 623' left to 685' right of centerline, up to 32' AGL/196' MSL.

NOTE: Chart not to scale.

DEPARTURE ROUTE DESCRIPTION

When entering controlled airspace, fly assigned heading for vectors to VUH VORTAC, maintain 4000', expect filed altitude 10 minutes after departure.

BATON ROUGE TRANSITION (VUH3.BTR): From over VUH VORTAC via VUH R-084 to KCEEE INT, then via BTR R-214 to BTR VORTAC.

LAKE CHARLES TRANSITION (VUH3.LCH): From over VUH VORTAC via VUH R-084 to METZY INT, then via LCH R-203 to LCH VORTAC.

LEEVILLE TRANSITION (VUH3.LEV): From over VUH VORTAC via VUH R-084 to KCEEE INT, then via LEV R-270 to LEV VORTAC.

MUSYL TRANSITION (VUH3.MUSYL): From over VUH VORTAC via VUH R-143 to MUSYL.