

RNAV (GPS) RWY 36

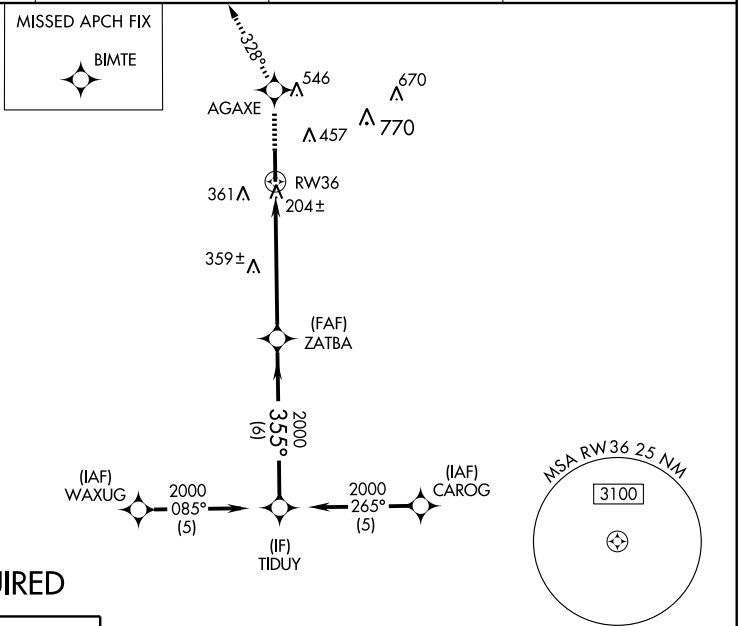
HOUSTON EXECUTIVE (TME)

WAAS CH 97504 W36A	APP CRS 355°	Rwy Idg 5050 TDZE 164 Apt Elev 166
--	------------------------	---

▼ Baro-VNAV NA when using David Wayne Hooks Memorial altimeter setting.
▲ NA For uncompensated Baro-VNAV systems, LNAV/VNAV NA below -15°C (5°F) or above 48°C (118°F). DME/DME RNP-0.3 NA. VDP NA when using David Wayne Hooks Memorial altimeter setting. When local altimeter setting not received, use David Wayne Hooks Memorial altimeter setting and increase LPV DA to 471 feet, LNAV/VNAV DA to 719 feet; increase all MDA 60 feet. Increase LNAV/VNAV visibility 1/4 mile all Cats and LNAV and circling Cat C/D 1/4 mile.

MISSED APPROACH:
 Climb to 2000 direct AGAXE and via 328° track to BIMTE and hold.

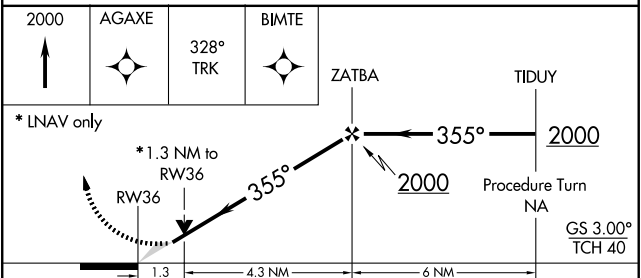
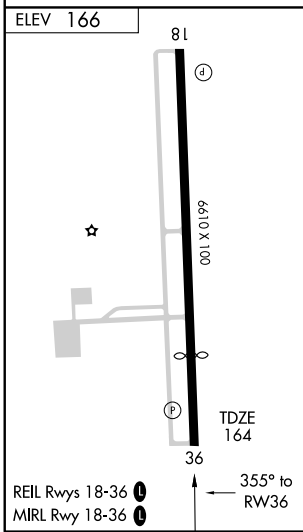
AWOS-A 122.975	HOUSTON APP CON 123.8 257.7	UNICOM 122.975 (CTAF) 0	GCO 121.725
--------------------------	---------------------------------------	-----------------------------------	-----------------------



SC-5, 22 OCT 2009 to 19 NOV 2009

SC-5, 22 OCT 2009 to 19 NOV 2009

RADAR REQUIRED



CATEGORY	A	B	C	D
LPV DA	414-1 250 (300-1)			
LNAV/VNAV DA	662-1¾ 498 (500-1¾)			
LNAV MDA	620-1	456 (500-1)	620-1¼ 456 (500-1¼)	620-1½ 456 (500-1½)
CIRCLING	820-1	654 (700-1)	820-1¾ 654 (700-1¾)	860-2¼ 694 (700-2¼)