

HOUSTON, TEXAS

AL-10328 (FAA)

RNAV (GPS) RWY 18

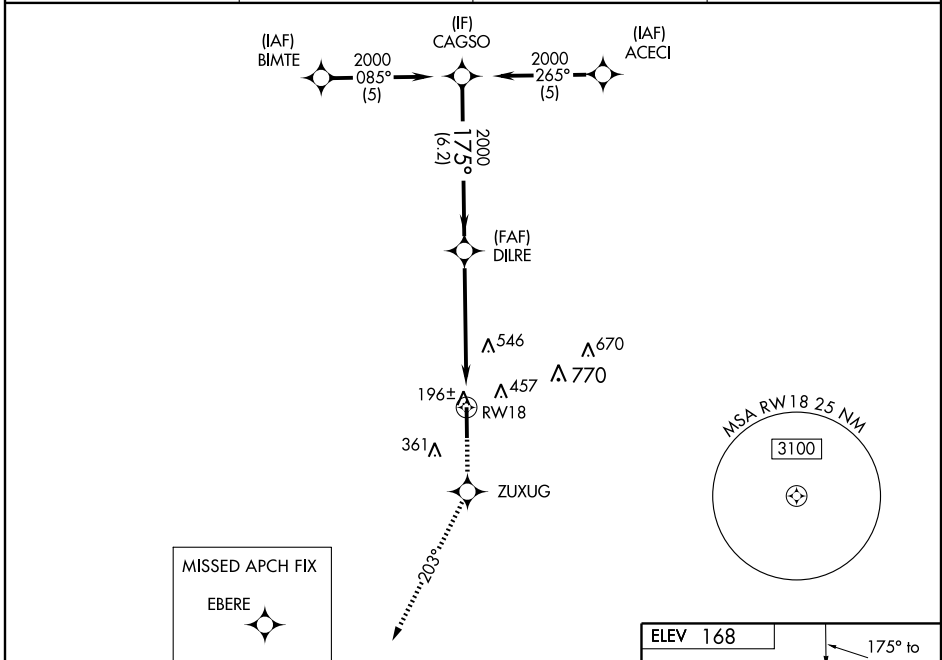
HOUSTON EXECUTIVE (TME)

WAAS CH 49004 W18A	APP CRS 175°	Rwy Idg 6610 TDZE 168 Apt Elev 168
--	------------------------	---

▽ Baro-VNAV NA when using David Wayne Hooks Memorial altimeter setting. For uncompensated Baro-VNAV systems, LNAV/VNAV NA below -1.5°C (5°F) or above 48°C (118°F). DME/DME RNP-0.3 NA. Visibility reduction by helicopters NA. VDP NA when using David Wayne Hooks Memorial altimeter setting. If local altimeter setting not received, use David Wayne Hooks Memorial altimeter setting and increase LPV DA to 475 feet, LNAV/VNAV DA to 950 feet; increase all MDAs 60 feet.

▲ NA MISSED APPROACH: Climb to 2000 direct ZUXUG and via 203° track to EBERE and hold.

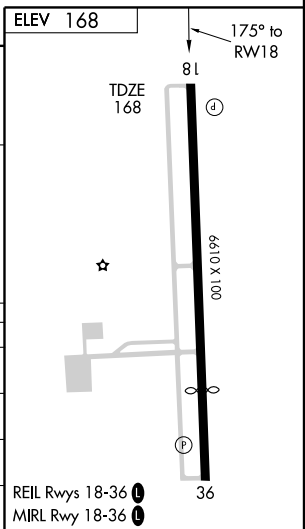
AWOS-A 122.975	HOUSTON APP CON 123.8 257.7	UNICOM 122.975 (CTAF) 0	GCO 121.725
--------------------------	---------------------------------------	--	-----------------------



SC-5, 22 OCT 2009 to 19 NOV 2009

SC-5, 22 OCT 2009 to 19 NOV 2009

Procedure Turn NA	CAGSO	DILRE	2000	ZUXUG	203° TRK	EBERE
CATEGORY	A	B	C	D		
LPV DA	418-1 250 (300-1)					
LNAV/VNAV DA	708-2 540 (600-2)					
LNAV MDA	780-1	612 (700-1)	780-1¼ 612 (700-1¾)	780-2 612 (700-2)		
CIRCLING	820-1	652 (700-1)	820-1¼ 652 (700-1¾)	860-2¼ 692 (700-2¼)		



HOUSTON, TEXAS
Orig 09071

29°48'N-095°54'W

HOUSTON EXECUTIVE (TME)

RNAV (GPS) RWY 18