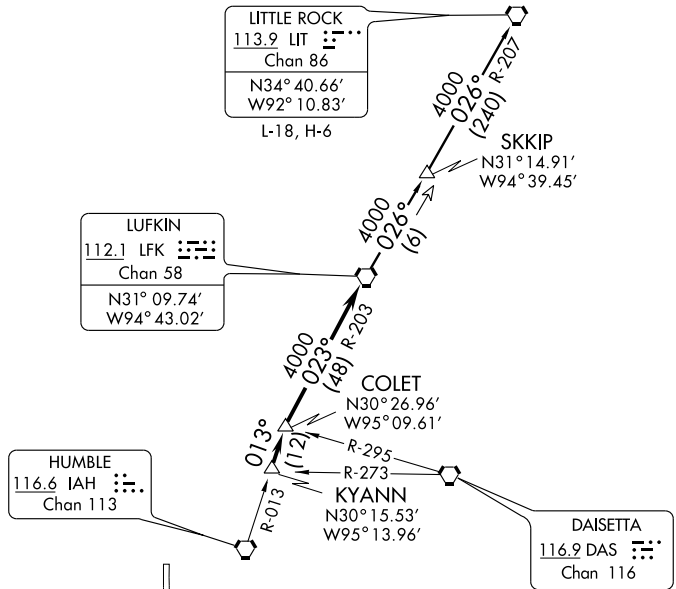


AWOS-A
122.975
CLNC DEL
121.725
HOUSTON DEP CON
123.8 257.7
CTAF
122.975



TAKE-OFF MINIMUMS:
Rwy 18, 36 standard.

TAKE-OFF OBSTACLES:

Rwy 36, Power poles from left to right beginning 703' from DER, 623' left to 685' right of centerline, up to 32' AGI/196' MSL.

NOTE: Radar Required.

NOTE: For aircraft destined LIT, or overflying LIT or PXV.

NOTE: Chart not to scale.



DEPARTURE ROUTE DESCRIPTION

When entering controlled airspace, fly assigned heading for vectors to KYANN INT, maintain 4000, expect filed altitude 10 minutes after departure. Thence via IAH R-013 to COLET INT, then right turn via LFK R-203 to LFK VORTAC.

LITTLE ROCK TRANSITION (LFK5.LIT): From over LFK VORTAC via LFK R-026 to SKKIP INT, then via LIT R-207 to LIT VORTAC.

SC-5, 22 OCT 2009 to 19 NOV 2009

SC-5, 22 OCT 2009 to 19 NOV 2009