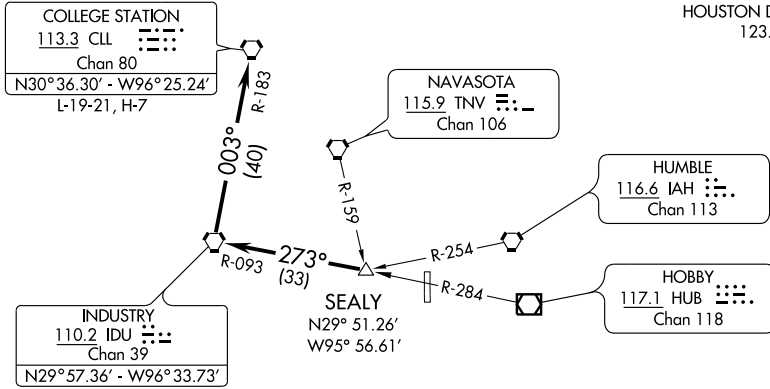


ASOS-A
118.325
CLNC DEL
121.725
HOUSTON DEP CON
123.8 257.7
CTAF
122.975



TAKE-OFF MINIMUMS:

Rwy 18, 36 standard.

TAKE-OFF OBSTACLES:

Rwy 36, Power poles from left to right beginning 703' from DER, 623' left to 685' right of centerline, up to 32' AGL/196' MSL.

NOTE: Radar Required.

NOTE: Chart not to scale.



DEPARTURE ROUTE DESCRIPTION

When entering controlled airspace, fly assigned heading for vectors to SEALY INT, maintain 4000, expect filed altitude 10 minutes after departure, Thence

. . . . via IDU R-093 to IDU VORTAC, then right turn via IDU R-003 and CLL R-183 to CLL VORTAC.