

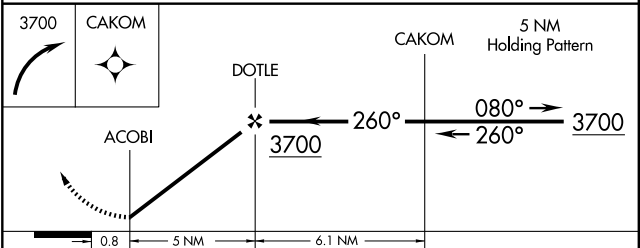
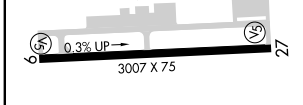
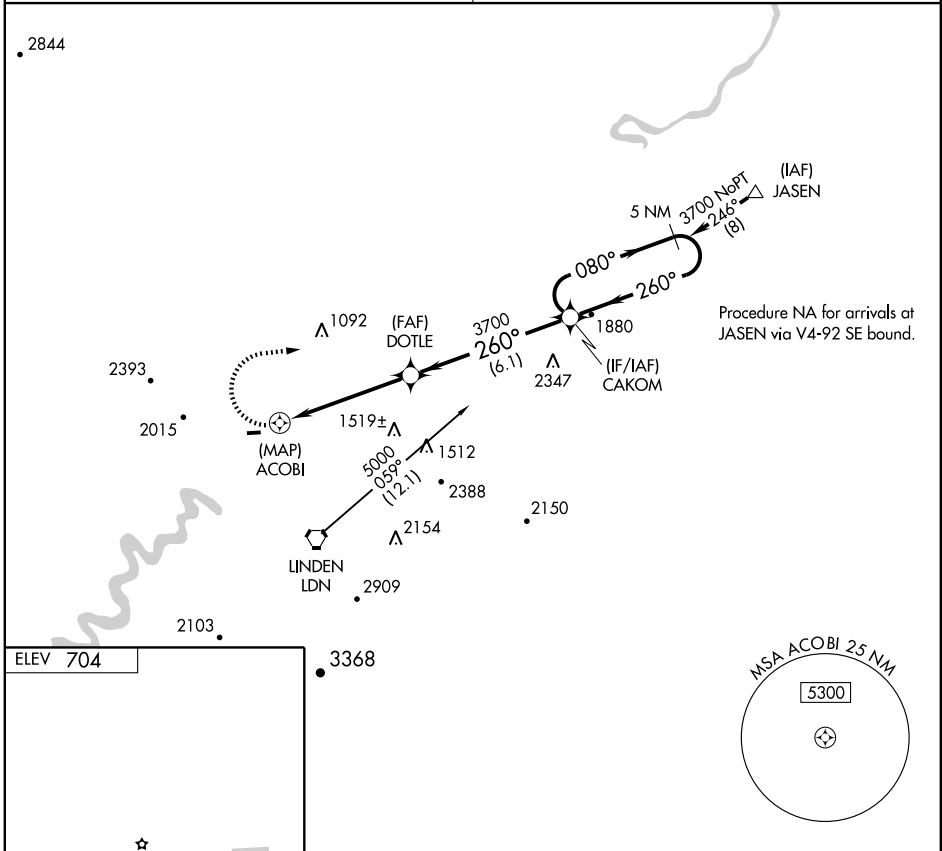
RNAV (GPS) -A

FRONT ROYAL-WARREN COUNTY (F.R.R.)

APP CRS 260°	Rwy Idg TDZE Apt Elev	N/A N/A 704
------------------------	-----------------------------	--

<p>▼ Use Winchester Rgnl altimeter setting; If not received use Eastern WV Rgnl/Shepherd Field altimeter setting and increase all MDAs 60 feet.</p> <p>▲ NA Procedure NA at night. DME/DME RNP-0.3 NA.</p>	<p>MISSED APPROACH: Climbing right turn to 3700 direct CAKOM and hold.</p>
--	--

POTOMAC APP CON 120.45	UNICOM 123.0 (CTAF) 0
----------------------------------	---------------------------------



MIRL Rwy 9-27 0				
CATEGORY	A	B	C	D
CIRCLING	1820-1¼ 1116 (1200-1¼)	1820-1½ 1116 (1200-1½)	NA	

NE-3, 22 OCT 2009 to 19 NOV 2009

NE-3, 22 OCT 2009 to 19 NOV 2009