

WAAS CH 48814 W09A	APP CRS 091°	Rwy Idg 3401 TDZE 244 Apt Elev 244
--	------------------------	---

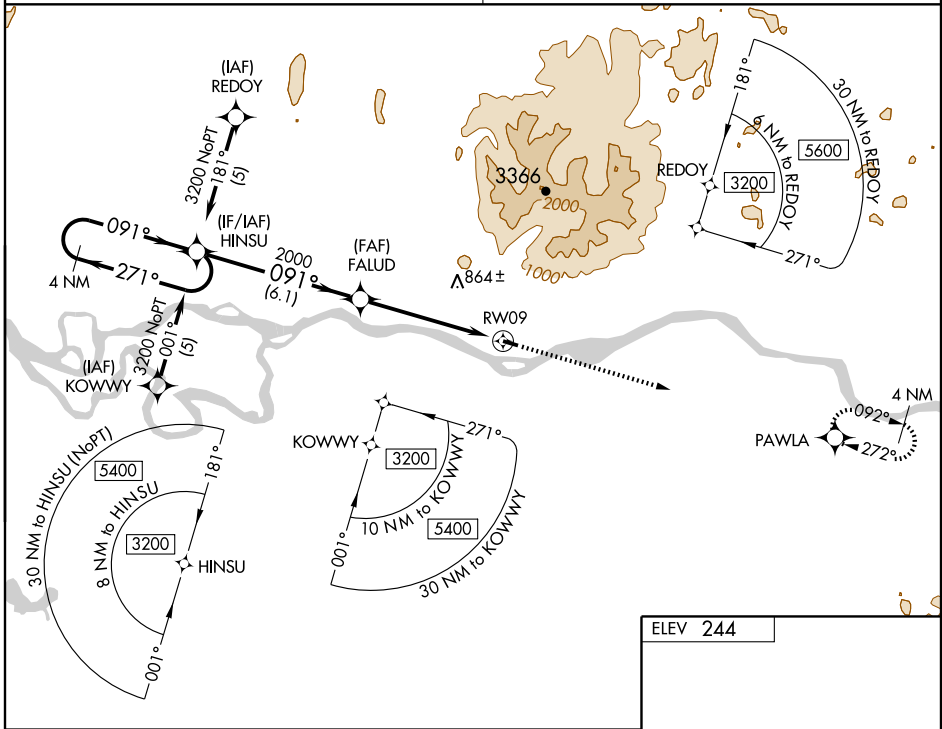
RNAV (GPS) RWY 9

CHUATHBALUK (9A3) (PACH)

⚠ Circling NA north of Rwy 9-27. DME/DME RNP-0.3 NA.
 Visibility reduction by helicopters NA.
⚠ NA Use Aniak altimeter setting; when not received, use Kalskag altimeter setting and increase all DA 58 feet and MDA 60 feet and increase LPV all Cats visibility ¼ mile, and increase LNAV and circling Cat C visibility ¼ mile.

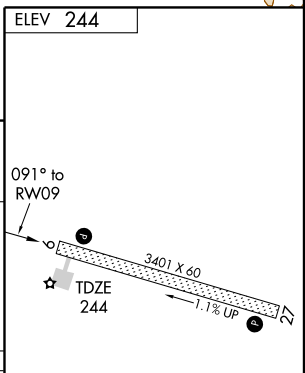
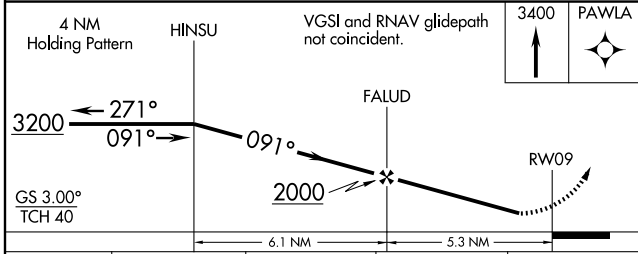
MISSED APPROACH: Climb to 3400 direct PAWLA and hold.

ANCHORAGE CENTER **118.15 251.05** CTAF **122.9**



AK, 22 OCT 2009 to 17 DEC 2009

AK, 22 OCT 2009 to 17 DEC 2009



CATEGORY	A	B	C	D
LPV DA	652-1½ 408 (500-1½)			NA
LNAV MDA	1000-1 756 (800-1)	1000-1¼ 756 (800-1¼)	1000-2¼ 756 (800-2¼)	NA
CIRCLING	1000-1 756 (800-1)	1000-1¼ 756 (800-1¼)	1000-2¼ 756 (800-2¼)	NA

MIRL Rwy 9-27 **⓪**
 REIL Rws 9 and 27 **⓪**