

SPRINGFIELD, COLORADO

AL-10312 (FAA)

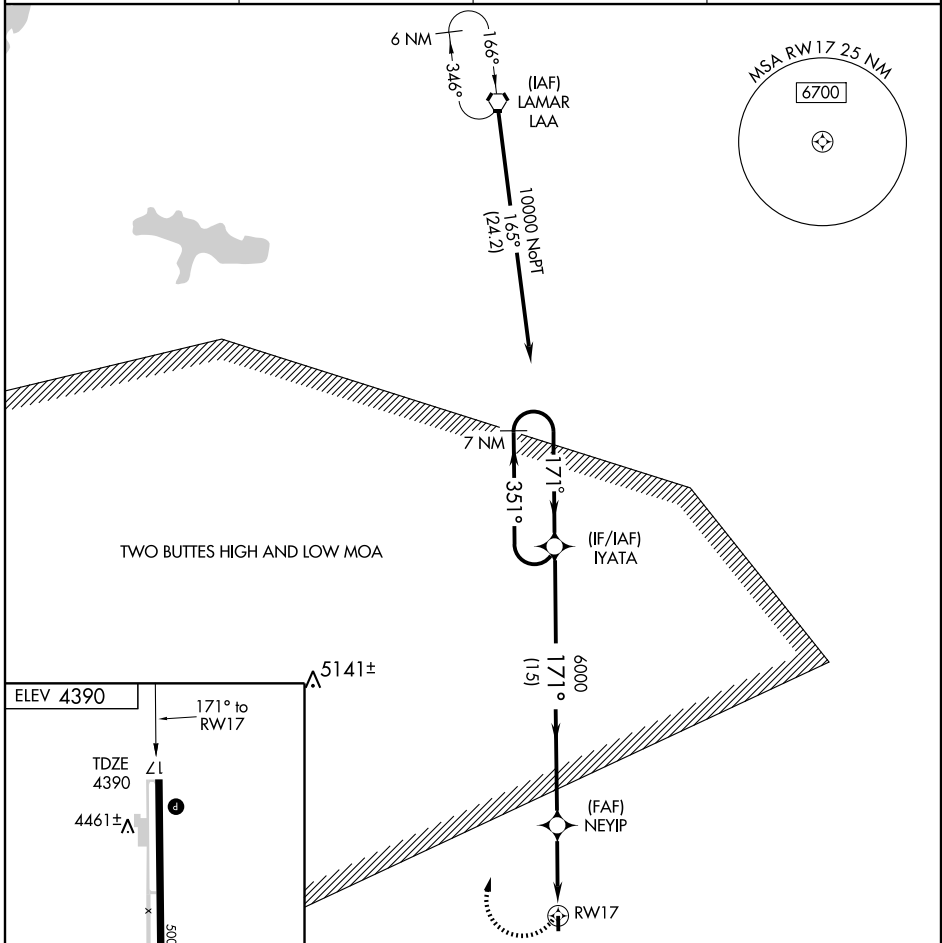
RNAV (GPS) RWY 17

SPRINGFIELD MUNI (8V7)

APP CRS	Rwy Idg	
171°	TDZE	4390
	Apt Elev	4390

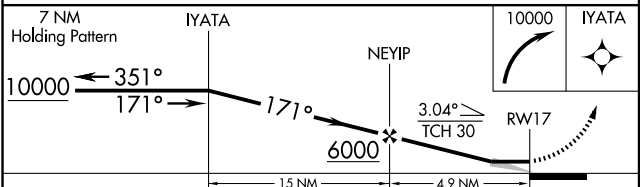
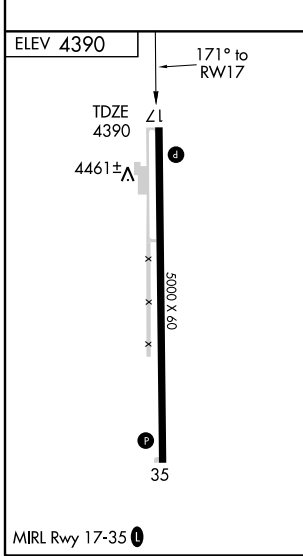
⚠ Use Lamar altimeter setting, if not received use La Junta altimeter setting and increase all MDAs 20 feet. DME/DME RNP-0.3 NA. **MISSED APPROACH:** Climbing right turn to 10000 direct IYATA and hold, continue climb-in-hold to 10000.

AWOS-3 122.9	LAMAR MUNI ASOS 135.625	DENVER CENTER 133.4 377.175	CTAF 122.9
------------------------	-----------------------------------	---------------------------------------	----------------------



SW-1, 22 OCT 2009 to 19 NOV 2009

SW-1, 22 OCT 2009 to 19 NOV 2009



CATEGORY	A	B	C	D
LNAV MDA	4960-1	570 (600-1)		NA
CIRCLING	5020-1	630 (700-1)		NA

SPRINGFIELD, COLORADO
Orig 09127

37°28'N-102°37'W

RNAV (GPS) RWY 17

SPRINGFIELD MUNI (8V7)