

# VOR/DME RWY 20

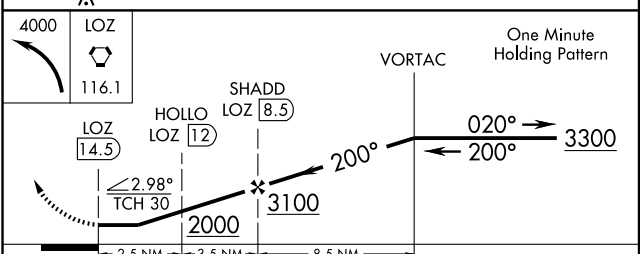
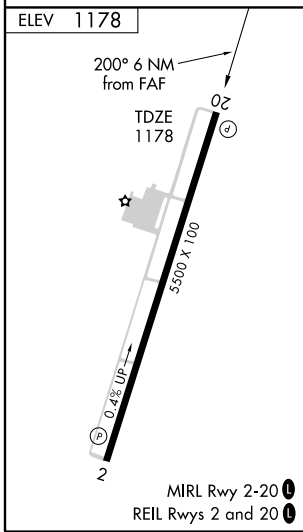
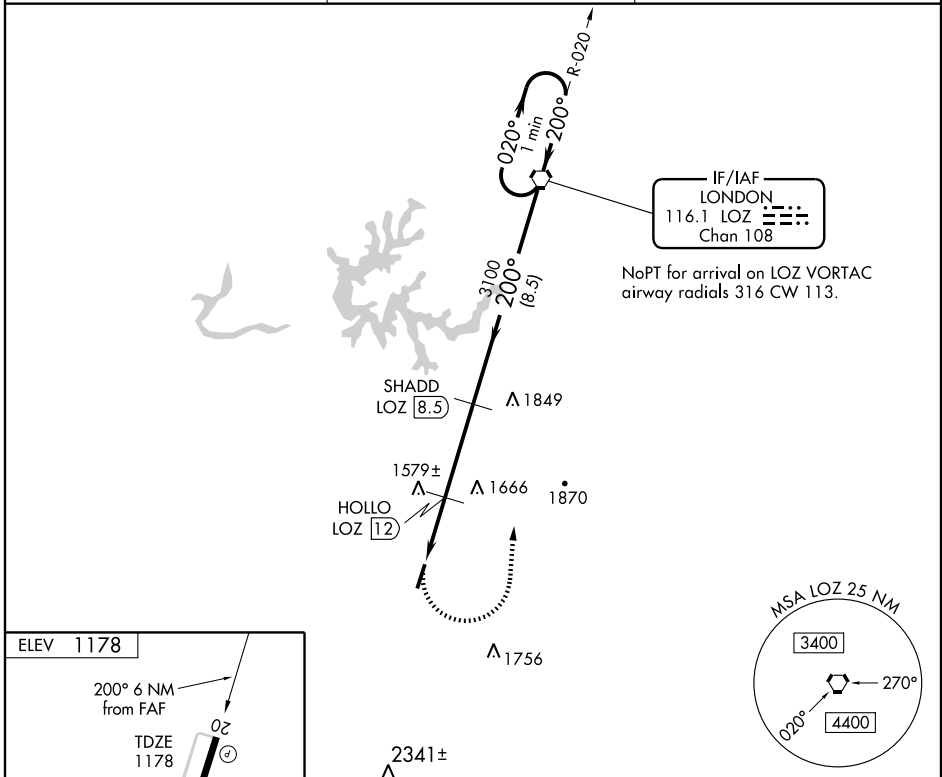
WILLIAMSBURG-WHITLEY COUNTY (W38)

VORTAC LOZ	APP CRS	Rwy ldg	5500
116.1	200°	TDZE	1178
Chan 108		Apt Elev	1178

**⚠** Visibility reduction by helicopters NA. Straight-in/Circling Rwy 20 NA at night. When local altimeter setting not received, use London-Corbin Arpt-Magee Fld altimeter setting and increase all MDA 60 feet and increase S-20 Cats. C and D and Circling Cat. C visibility ¼ mile.

**MISSED APPROACH:**  
Climbing left turn to 4000 direct LOZ VORTAC and hold.

AWOS-3 <b>119.575</b>	INDIANAPOLIS CENTER <b>124.625 371.925</b>	UNICOM <b>122.7 (CTAF) 0</b>
--------------------------	---	---------------------------------



CATEGORY	A	B	C	D
S-20	1840-1	662 (700-1)	1840-1¾ 662 (700-1¾)	1840-2 662 (700-2)
CIRCLING	1840-1	662 (700-1)	1840-1¾ 662 (700-1¾)	2060-3 882 (900-3)

# VOR/DME RWY 20

SE-1, 22 OCT 2009 to 19 NOV 2009

SE-1, 22 OCT 2009 to 19 NOV 2009