

WAAS CH <b>70403</b> <b>W20A</b>	APP CRS <b>203°</b>	Rwy Idg TDZE Apt Elev	<b>5500</b> <b>1178</b> <b>1178</b>
--	------------------------	-----------------------------	---

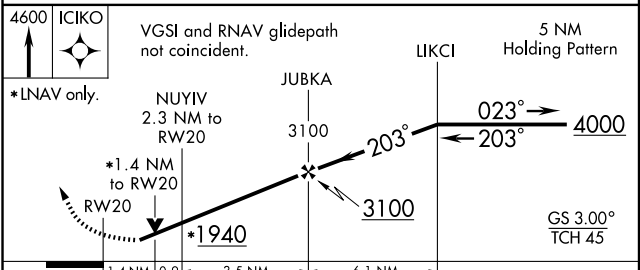
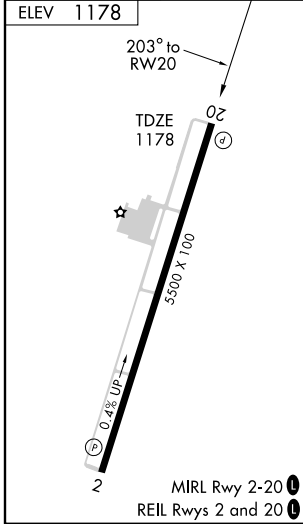
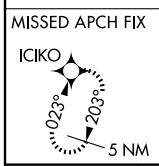
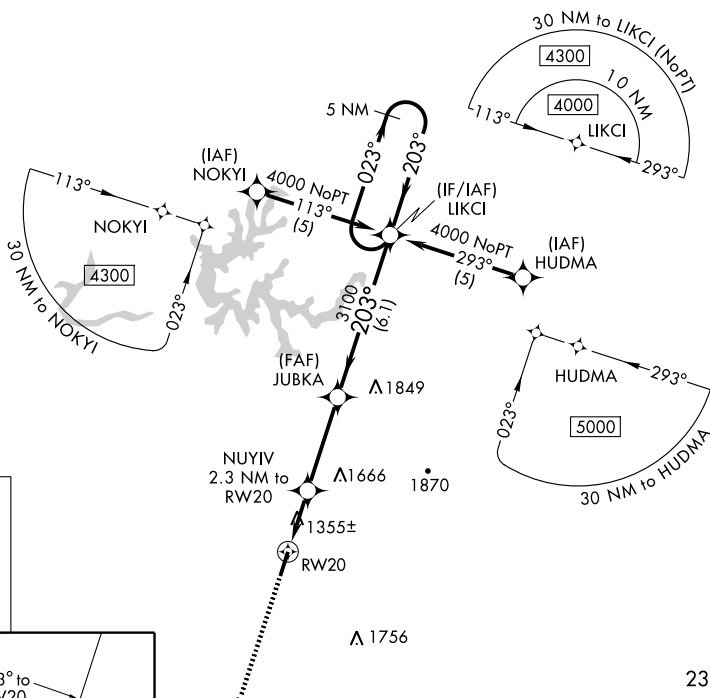
# RNAV (GPS) RWY 20

WILLIAMSBURG-WHITLEY COUNTY (W38)

**⚠** If local altimeter setting not received, use London-Corbin Arprt-Magee Fld altimeter setting and increase all DAs/MDAs 60 feet. DME/DME RNP-0.3 NA. Procedure NA at night. Visibility reduction by helicopters NA. VDP NA when using London-Corbin Arprt-Magee Fld altimeter setting.

**MISSED APPROACH:** Climb to 4600 direct ICIKO and hold.

AWOS-3 <b>119.575</b>	INDIANAPOLIS CENTER <b>124.625 371.925</b>	UNICOM <b>122.7 (CTAF) 0</b>
--------------------------	---	---------------------------------



CATEGORY	A	B	C	D
LPV DA	1614-1½		436 (500-1½)	
LNAV MDA	1680-1	502 (600-1)	1680-1½	502 (600-1½)
CIRCLING	1680-1	502 (600-1)	1680-1½	1960-2 782 (800-2)

SE-1, 22 OCT 2009 to 19 NOV 2009

SE-1, 22 OCT 2009 to 19 NOV 2009