

WILLMAR, MINNESOTA

AL-10310 (FAA)

RNAV (GPS) RWY 31

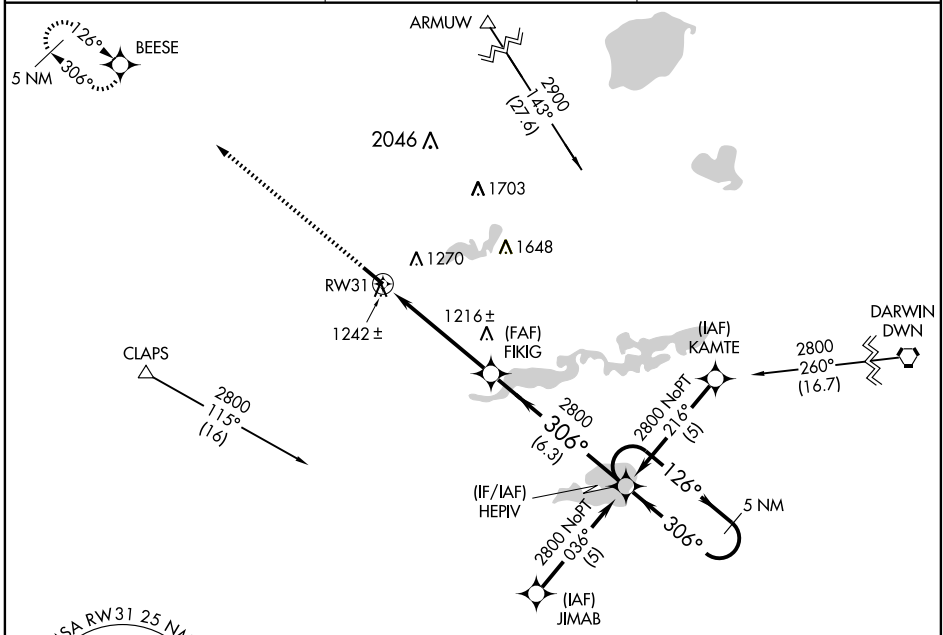
WILLMAR MUNI-JOHN L RICE FIELD (BDH)

APP CRS	Rwy Idg	5500
306°	TDZE	1126
	Apt Elev	1126

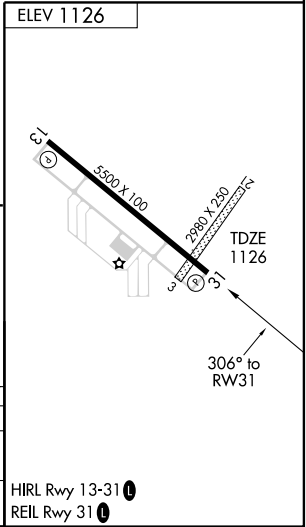
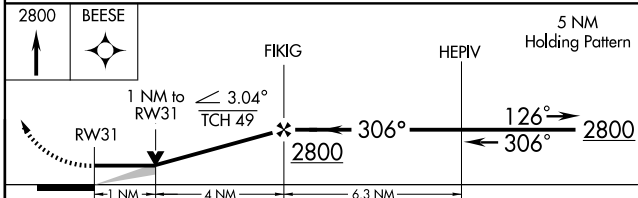
⚠ If local altimeter setting not received, use Olivia Rgnl altimeter setting and increase all MDAs 60 feet.
⚠ VDP NA with Olivia Rgnl altimeter setting.
 DME/DME RNP -0.3 NA.

MISSED APPROACH: Climb to 2800 direct BEESE and hold.

AWOS-3 113.7	MINNEAPOLIS CENTER 125.5 323.1	UNICOM 122.8 (CTAF) 0
------------------------	--	---------------------------------



Procedure NA for arrival at RWF VOR/DME on airway radials 054 CW 060.



CATEGORY	A	B	C	D
LNVA MDA	1500-1	374 (400-1)		1500-1¼ 374 (400-1½)
CIRCLING	1520-1 394 (400-1)	1580-1 454 (500-1)	1580-1½ 454 (500-1½)	1680-2 554 (600-2)

WILLMAR, MINNESOTA
 Orig 09239

45°07'N-95°08'W

RNAV (GPS) RWY 31

NC-1, 22 OCT 2009 to 19 NOV 2009

NC-1, 22 OCT 2009 to 19 NOV 2009