

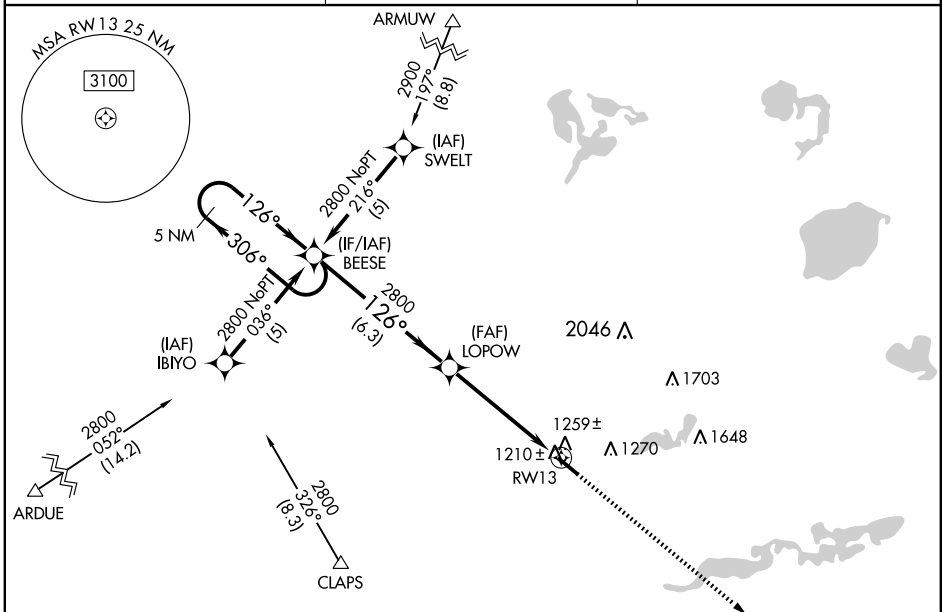
WAAS CH <b>93902</b> <b>W13A</b>	APP CRS <b>126°</b>	Rwy Idg <b>5500</b> TDZE <b>1124</b> Apt Elev <b>1126</b>
--	------------------------	---

**RNAV (GPS) RWY 13**  
WILLMAR MUNI-JOHN L RICE FIELD (BDH)

**▼** If local altimeter setting not received, use Olivia Rgnl altimeter setting and increase all DAs/MDAs 60 feet. DME/DME RNP -0.3 NA.  
**▲** For uncompensated Baro-VNAV systems, LNAV/VNAV NA below -17°C (2°F) or above 46°C (116°F).  
 Baro-VNAV and VDP NA when using Olivia Rgnl altimeter setting.

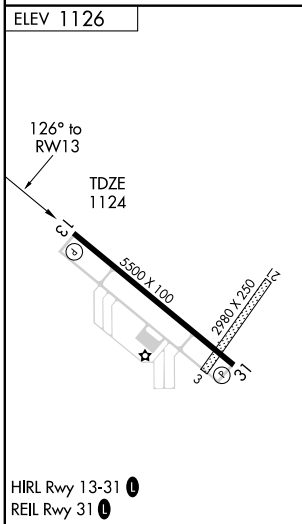
**MISSED APPROACH:** Climb to 2800 direct HEPIV and hold.

AWOS-3 <b>113.7</b>	MINNEAPOLIS CENTER <b>125.5 323.1</b>	UNICOM <b>122.8 (CTAF) 0</b>
------------------------	--	---------------------------------



NC-1, 22 OCT 2009 to 19 NOV 2009

NC-1, 22 OCT 2009 to 19 NOV 2009



HIRL Rwy 13-31 **0**  
REIL Rwy 31 **0**

ELEV 1126				
5 NM Holding Pattern BEESE      LOPOW 2800 ← 306°      126° → 126°      2800 GS 3.00° TCH 52	*1.4 NM to RWY13 RWY13		*LNAV only	
	6.3 NM		3.6 NM	
			1.4 NM	
CATEGORY	A	B	C	D
LPV DA	1387-1 263 (300-1)			
LNAV/VNAV DA	1480-1¼ 356 (400-1¼)			
LNAV MDA	1620-1	496 (500-1)	1620-1¼ 496 (500-1¼)	1620-1½ 496 (500-1½)
CIRCLING	1620-1	494 (500-1)	1620-1½ 494 (500-1½)	1680-2 554 (600-2)