

RNAV (GPS) RWY 14

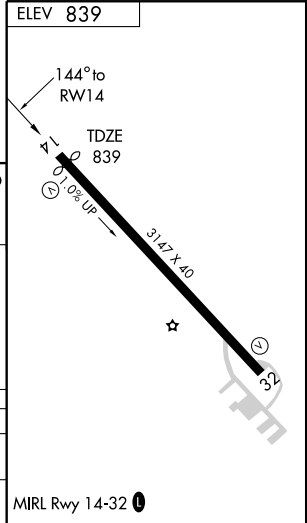
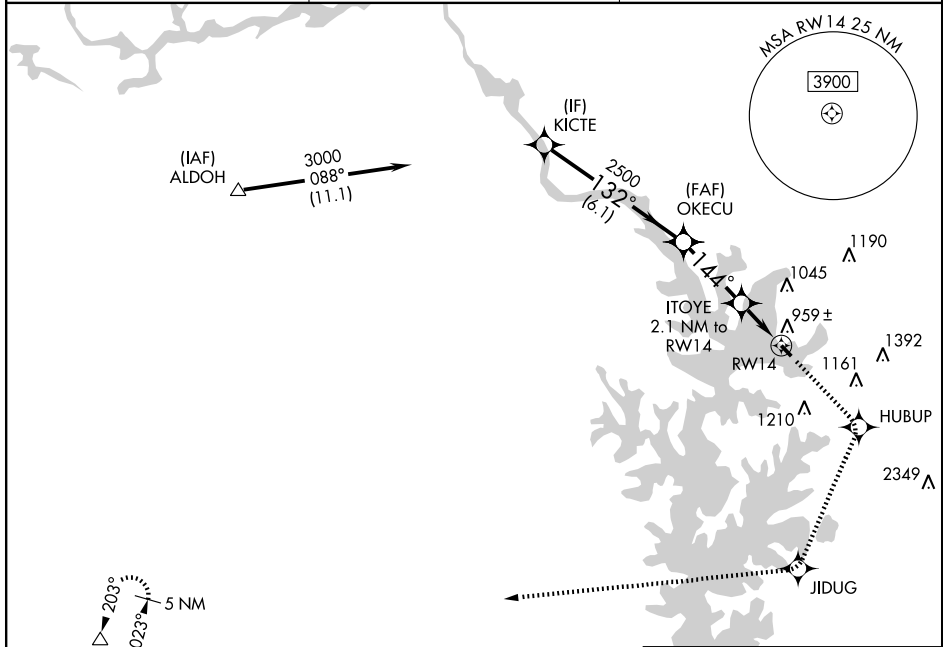
MOORESVILLE/ LAKE NORMAN AIRPARK (14A)

APP CRS 144°	Rwy Idg 2962
	TDZE 839
	Apt Elev 839

▼ Use Statesville altimeter setting; if not received, use Charlotte altimeter setting and increase all MDAs 40 feet. DME/DME RNP-0.3 NA.
▲ NA Visibility reduction by helicopters NA. Circling to Rwy 32 NA at night.

MISSED APPROACH: Climb to 4000 direct HUBUP and via 210° track to JIDUG and 271° track to LINCO and hold.

STATESVILLE RGNL AWOS-3 119.225	CHARLOTTE APP CON 134.75 257.2	UNICOM 122.8 (CTAF) 0
--	--	--



KICTE 3000 Procedure Turn NA	OKECU 2500	4000	HUBUP	JIDUG	LINCO
		↑	210° TRK	271° TRK	△
132°		144°		VGS1 and descent angles not coincident.	
6.1 NM		3 NM		2.1 NM	
ITOYE 2.1 NM to RWY 14 1420		RWY 14			

CATEGORY	A	B	C	D
RNAV MDA	1260-1	421 (500-1)	NA	
CIRCLING	1320-1	481 (500-1)	NA	

RNAV (GPS) RWY 14

SE-2, 22 OCT 2009 to 19 NOV 2009

SE-2, 22 OCT 2009 to 19 NOV 2009