

# RNAV (GPS) RWY 26

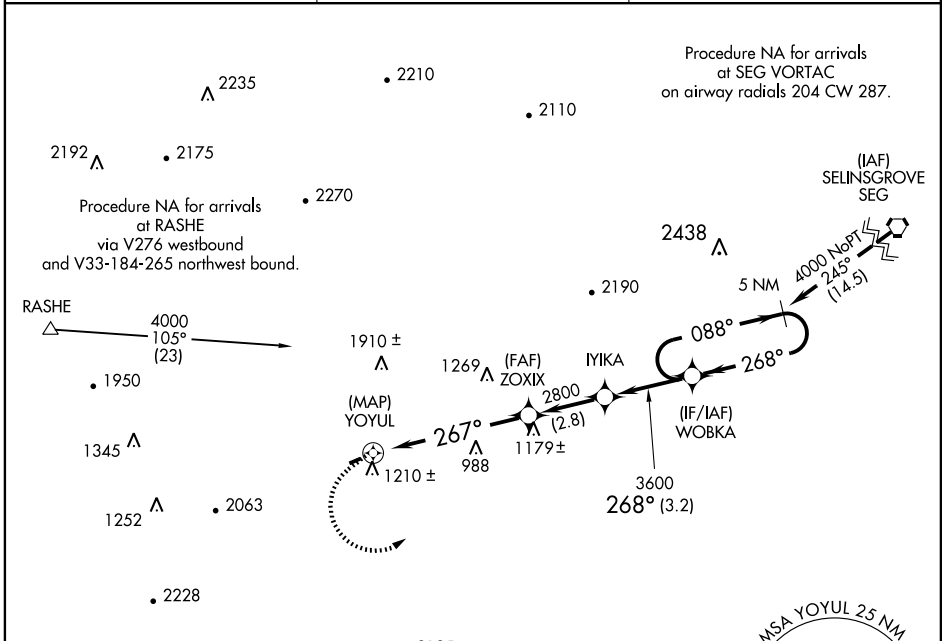
MIFFLINTOWN (P34)

APP CRS <b>267°</b>	Rwy Idg <b>2627</b>
	TDZE <b>545</b>
	Apt Elev <b>545</b>

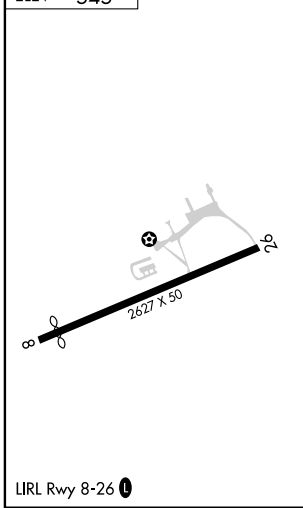
**Procedure NA at night. Use Penn Valley altimeter setting, if not received, use Reedsville altimeter setting and increase all MDAs 240 feet. DME/DME RNP-0.3 NA.**

**MISSED APPROACH:** Climbing left turn to 4000 direct WOBKA and hold.

<b>PENN VALLEY ASOS</b> <b>119.275</b>	<b>NEW YORK APP CON</b> <b>134.8 338.2</b>	<b>UNICOM</b> <b>122.8 (CTAF) 0</b>
---	---	--



ELEV 545



CATEGORY	A	B	C	D
LNAV MDA	1440-1¼	895 (900-1¼)	NA	
CIRCLING	1560-1¼ 1015 (1100-1¼)	1640-1½ 1095 (1100-1½)	NA	

NE-4, 22 OCT 2009 to 19 NOV 2009

NE-4, 22 OCT 2009 to 19 NOV 2009