

HULETT, WYOMING

AL-10288 (FAA)

RNAV (GPS)-A

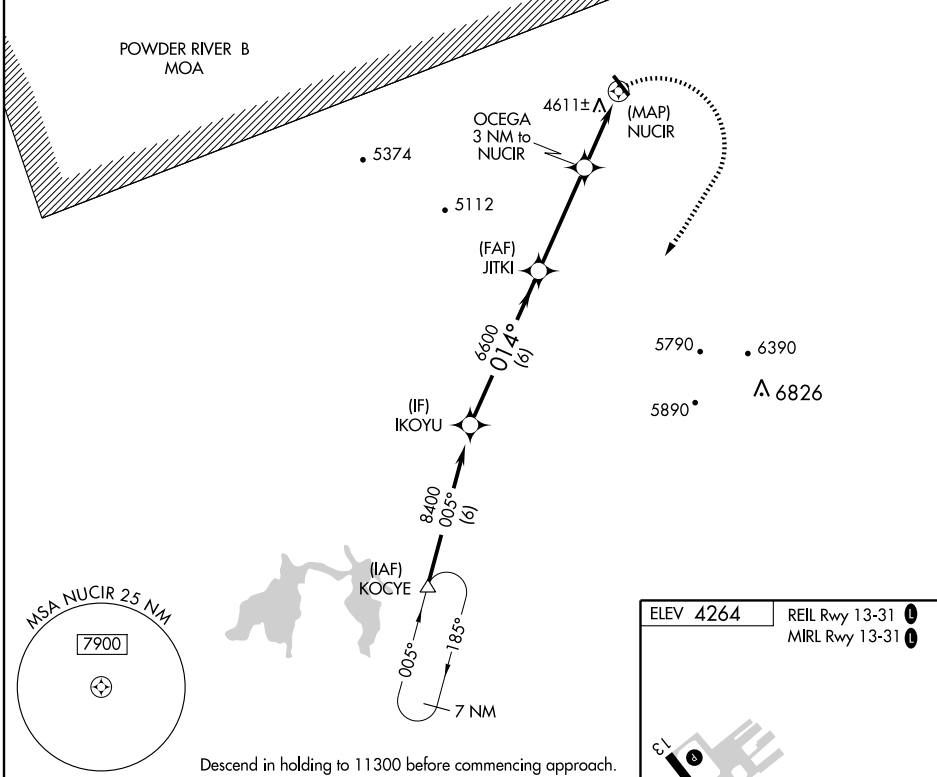
HULETT MUNI (W43)

APP CRS	Rwy Idg	N/A
014°	TDZE	N/A
	Apt Elev	4264

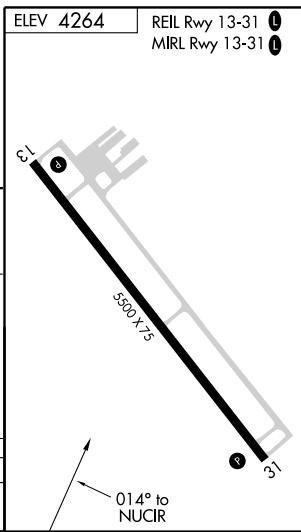
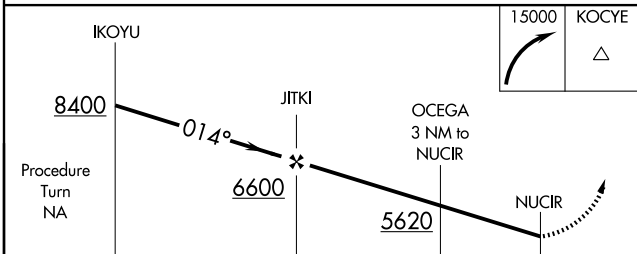
Procedure NA at night.
DME/DME RNP -0.3 NA.
 If local altimeter setting not received, use Gillette altimeter setting and increase all MDAs 120 feet.

MISSED APPROACH: Climbing right turn to 15000 direct KOCYE and hold, continue climb-in-hold to 15000.

AWOS-3 128.755	DENVER CENTER 127.95 338.2	UNICOM 122.8 (CTAF) 0
--------------------------	--------------------------------------	---------------------------------



Descend in holding to 11300 before commencing approach.



CATEGORY	A	B	C	D
CIRCLING	4920-1 656 (700-1)	5060-1¼ 796 (800-1¼)	NA	

HULETT, WYOMING
Orig 07354

44°40'N- 104°34'W

HULETT MUNI (W43)

RNAV (GPS)-A

NW-1, 22 OCT 2009 to 19 NOV 2009

NW-1, 22 OCT 2009 to 19 NOV 2009