

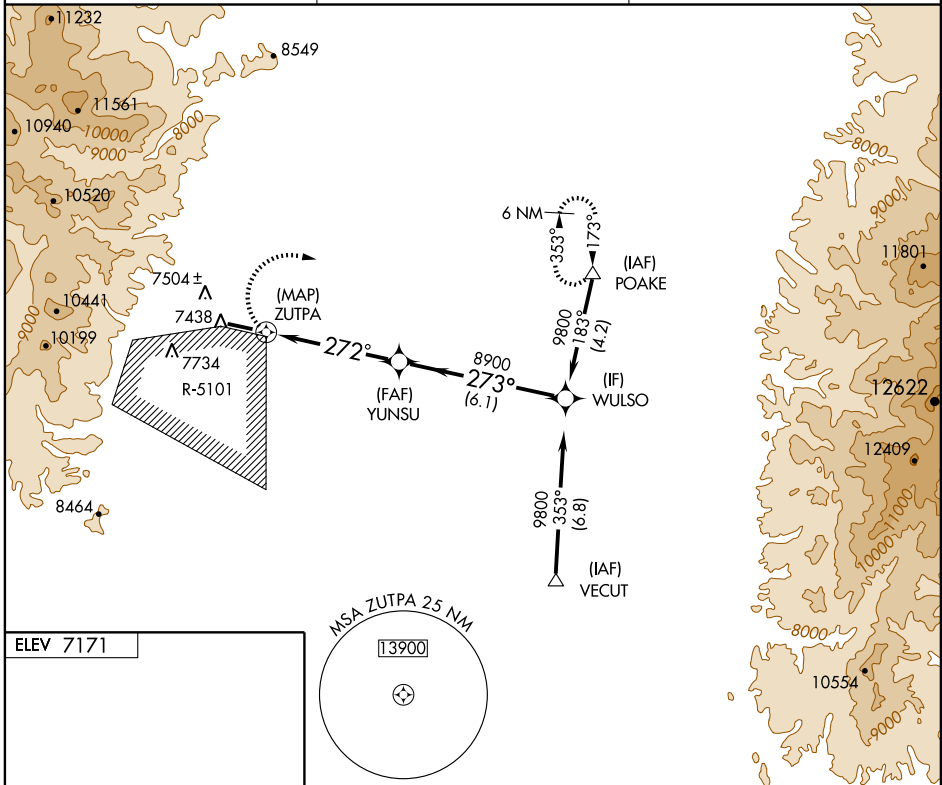
# RNAV (GPS) RWY 27

LOS ALAMOS (L.A.M)

APP CRS <b>272°</b>	Rwy Idg <b>5550</b>
	TDZE <b>7132</b>
	Apt Elev <b>7171</b>

<p><b>▽</b> NA</p> <p>DME/DME RNP- 0.3 NA. If local altimeter setting not received, procedure NA.</p>	<p>MISSED APPROACH: Climbing right turn to 11000 direct POAKE and hold.</p>
---	---

<p>AWOS-3 <b>124.175</b></p>	<p>ALBUQUERQUE CENTER <b>132.8 346.35</b></p>	<p>UNICOM <b>123.0 (CTAF)</b></p>
----------------------------------	---	---------------------------------------



SW-1, 22 OCT 2009 to 19 NOV 2009

SW-1, 22 OCT 2009 to 19 NOV 2009

ELEV 7171

REL Rwy 27 **Ⓛ**  
MIRL Rwy 9-27 **Ⓛ**

MSA ZUTPA 25 NM  
13900

11000 POAKE **△**

VGSI and descent angles not coincident

WULSO

YUNSU

ZUTPA

ZUTPA

1.2 NM to ZUTPA

$\leq 3.01^\circ$   
TCH 50

272°

8900

273°

9800

Procedure Turn NA

	0.5	1.2 NM	3.7 NM	6.1 NM	
CATEGORY	A	B	C	D	
LNAV MDA	7680-1	548 (600-1)	7680-1½ 548 (600-1½)	NA	
CIRCLING	NA				