

RNAV (GPS) RWY 4
SCOTTSBORO MUNI-WORD FIELD (4A6)

APP CRS	Rwy Idg	5250
040°	TDZE	650
	Apt Elev	650

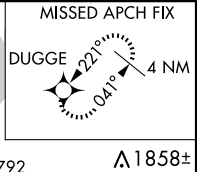
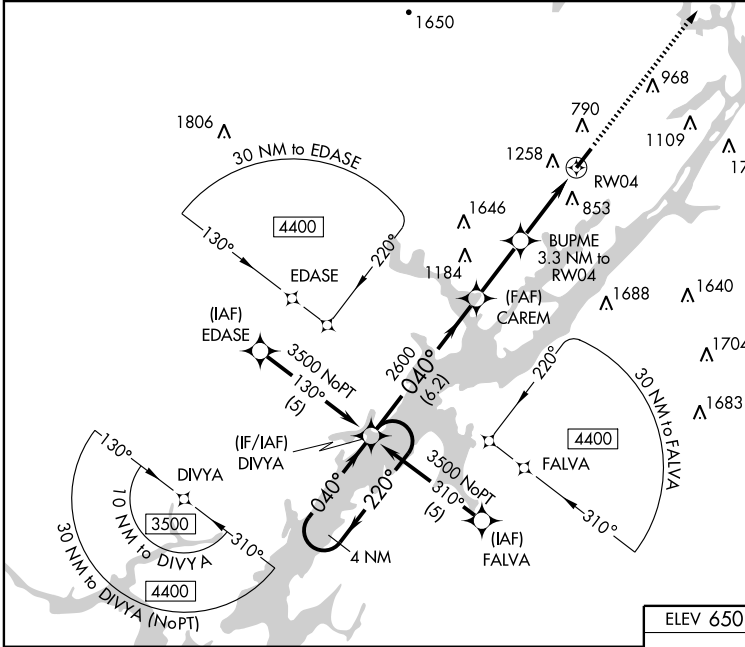
▽ NA
▲ NA

DME/DME RNP-0.3 NA. Procedure NA at night. Visibility reduction by helicopters NA. Obtain local altimeter setting on CTAF; when not received, use Fort Payne altimeter setting.

MISSED APPROACH: Climb to 3500 direct DUGGE and hold.

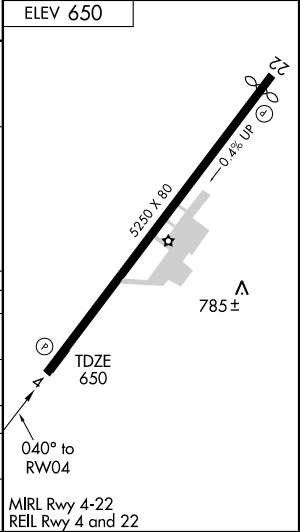
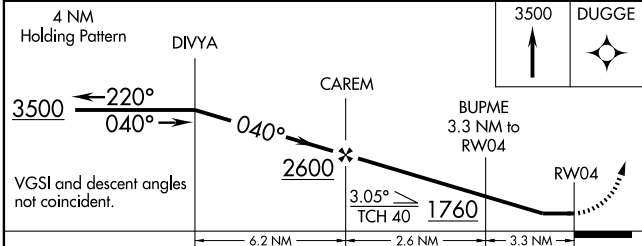
ATLANTA CENTER
133.8 353.7

UNICOM
123.0 (CTAF)



SE-4, 22 OCT 2009 to 19 NOV 2009

SE-4, 22 OCT 2009 to 19 NOV 2009



CATEGORY	A	B	C	D
LNAV MDA	1520-1 870 (900-1)	1520-1¼ 870 (900-1¼)	1520-2½ 870 (900-2½)	1520-2¾ 870 (900-2¾)
CIRCLING	1620-1¼ 970 (1000-1¼)	1700-1½ 1050 (1100-1½)	1800-3	1150 (1200-3)
FORT PAYNE ALTIMETER SETTING MINIMUMS				
LNAV MDA	1600-1¼ 950 (1000-1¼)	1600-2¾ 950 (1000-2¾)	1600-3 950 (1000-3)	1600-3 950 (1000-3)
CIRCLING	1700-1¼ 1050 (1100-1¼)	1780-1½ 1130 (1200-1½)	1880-3	1230 (1300-3)