

RNAV (GPS) RWY 36

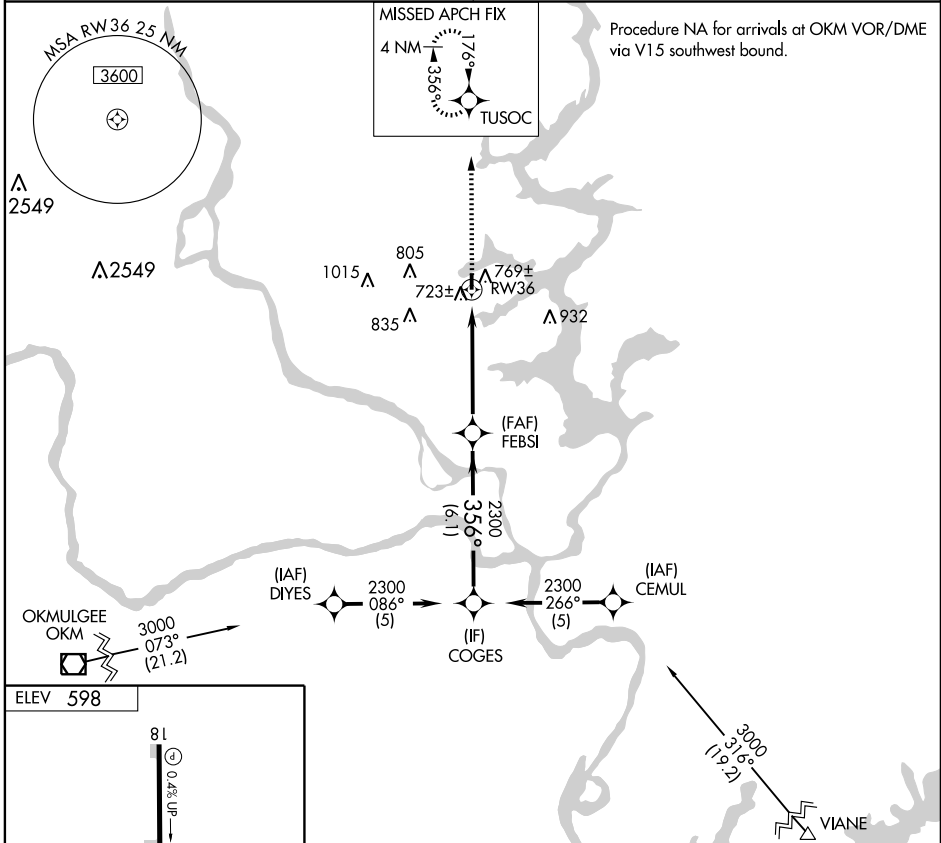
WAGONER/HEFNER-EASLEY (H68)

APP CRS 356°	Rwy Idg 3405
	TDZE 598
	Apt Elev 598

▼ Use Muskogee altimeter setting; when not received, use Tahlequah altimeter setting and increase all MDAs 40 feet. Procedure NA at night.
▲ NA DME/DME RNP-0.3 NA.

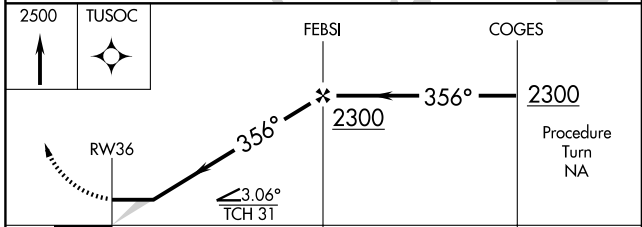
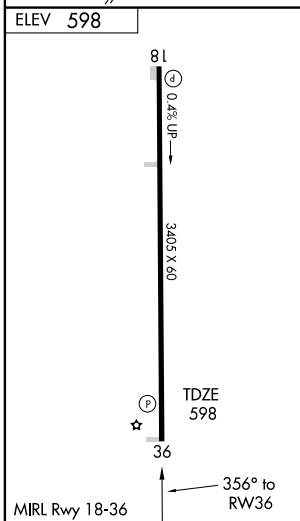
MISSED APPROACH: Climb to 2500 direct TUSOC and hold.

TULSA APP CON 119.1 351.8	CTAF 122.9
-------------------------------------	----------------------



SC-1, 22 OCT 2009 to 19 NOV 2009

SC-1, 22 OCT 2009 to 19 NOV 2009



CATEGORY	A	B	C	D
LNAV MDA	1100-1	502 (600-1)	NA	
CIRCLING	1180-1	582 (600-1)	NA	