

RNAV (GPS) RWY 18

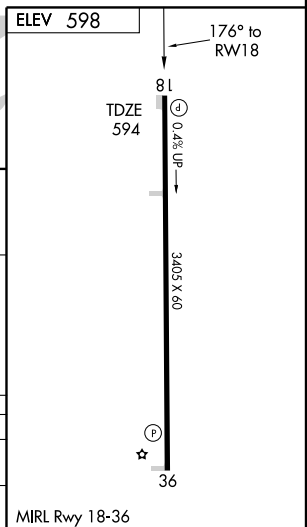
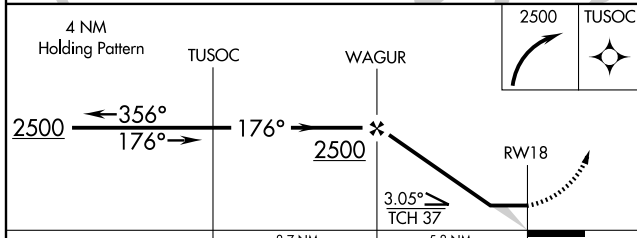
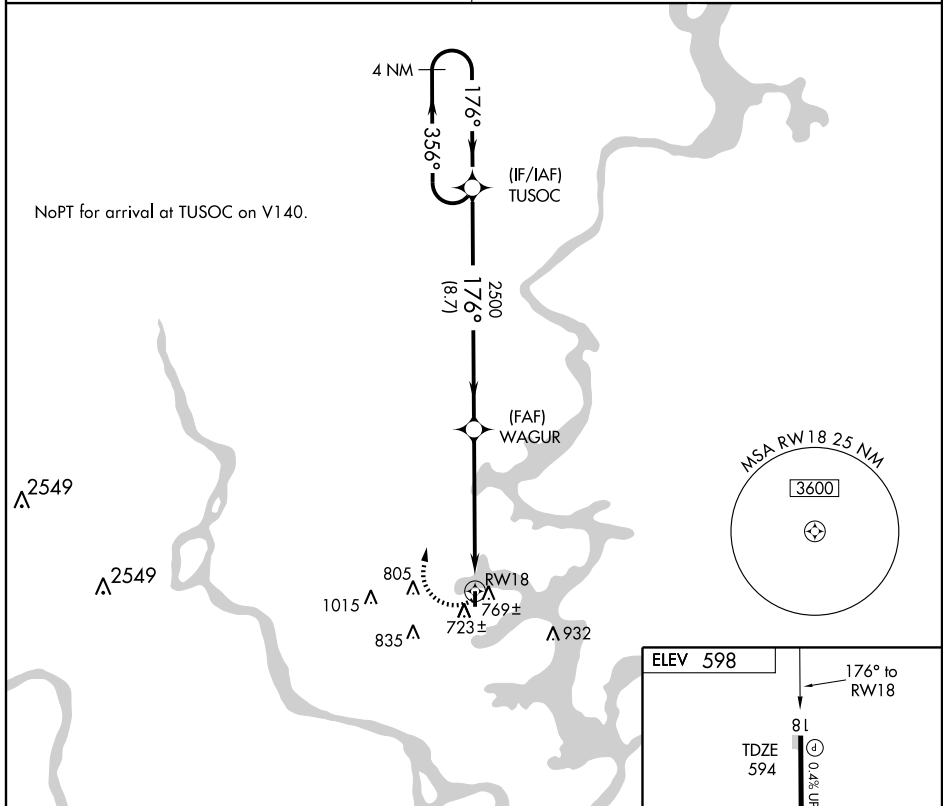
WAGONER/HEFNER-EASLEY (H68)

APP CRS 176°	Rwy Idg 3405
	TDZE 594
	Apt Elev 598

NA Use Muskogee altimeter setting; when not received, use Tahlequah altimeter setting and increase all MDAs 40 feet. Procedure NA at night. DME/DME RNP-0.3 NA.

MISSED APPROACH: Climbing right turn to 2500 direct TUSOC and hold.

TULSA APP CON 119.1 351.8	CTAF 122.9
-------------------------------------	----------------------



CATEGORY	A	B	C	D
LNVA MDA	1080-1	486 (500-1)		NA
CIRCLING	1180-1	582 (600-1)		NA

SC-1, 22 OCT 2009 to 19 NOV 2009

SC-1, 22 OCT 2009 to 19 NOV 2009