

RNAV (GPS) RWY 18

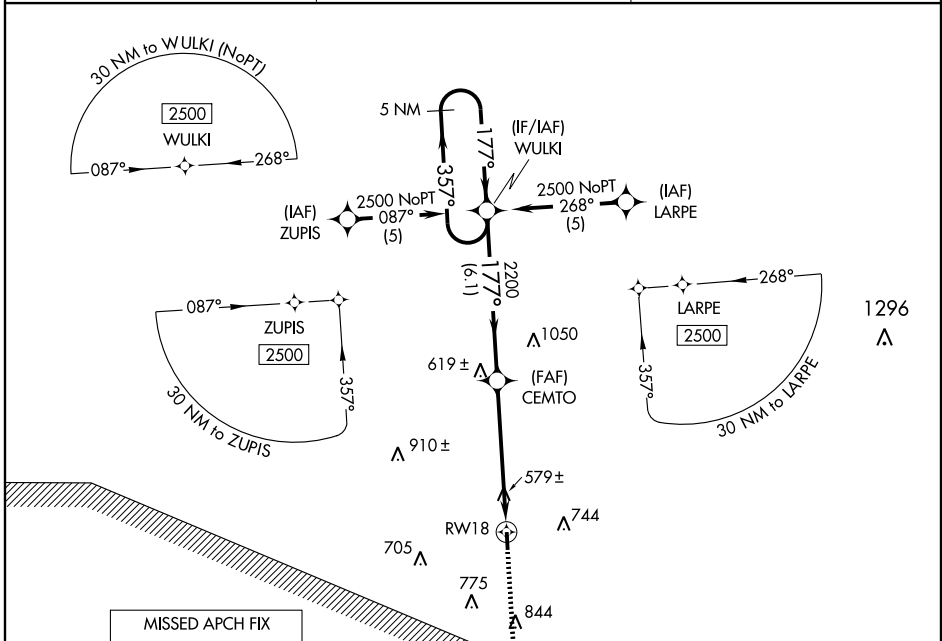
NEW ALBANY-UNION CO (M72)

APP CRS	Rwy Idg	3903
177°	TDZE	413
	Apt Elev	413

▼ Use Tupelo altimeter setting, if not received, use Oxford altimeter setting and increase all MDAs 20 feet. Procedure NA at night. DME/DME RNP-0.3 NA. Visibility reduction by helicopters NA.

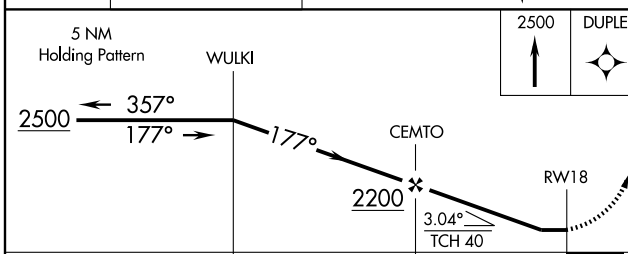
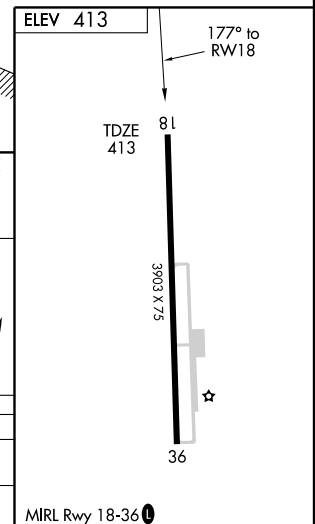
▲ NA MISSED APPROACH: Climb to 2500 direct DUPLÉ and hold.

TUPELO ASOS 133.525	MEMPHIS CENTER 135.9 273.55	UNICOM 122.8 (CTAF) 0
-------------------------------	---------------------------------------	---------------------------------



SC-4, 22 OCT 2009 to 19 NOV 2009

SC-4, 22 OCT 2009 to 19 NOV 2009



CATEGORY	A	B	C	D
LNVA MDA	900-1	487 (500-1)	900-1¼ 487 (500-1¼)	NA
CIRCLING	940-1	527 (600-1)	940-1½ 527 (600-1½)	NA