

# RNAV (GPS) RWY 16

HIGGINSVILLE INDUSTRIAL MUNI (HIG)

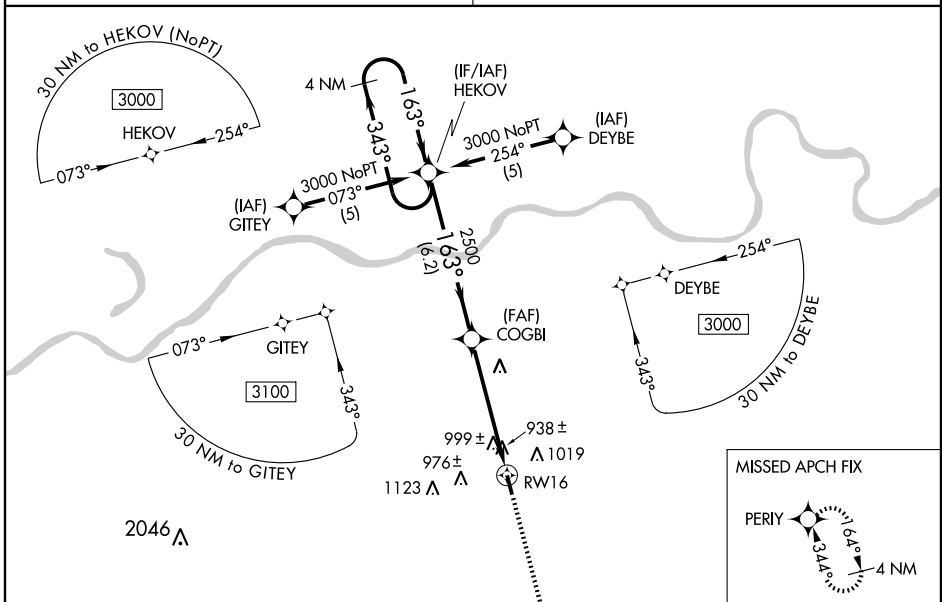
WAAS CH <b>86601</b> W16A	APP CRS <b>163°</b>	Rwy ldg <b>4400</b> TDZE <b>840</b> Apt Elev <b>840</b>
---------------------------------	------------------------	---

**NA** DME/DME RNP-0.3 NA. Baro-VNAV NA.  
 Use Whiteman Air Force Base altimeter setting; if not received, use Lee's Summit Muni altimeter setting and increase LPV DA to 1293, LNAV/VNAV to 1410 and all MDAs 60 feet, increase LPV all Cats. and Circling Cat. C visibility ¼ mile.

MISSED APPROACH: Climb to 3000 direct PERIY and hold.

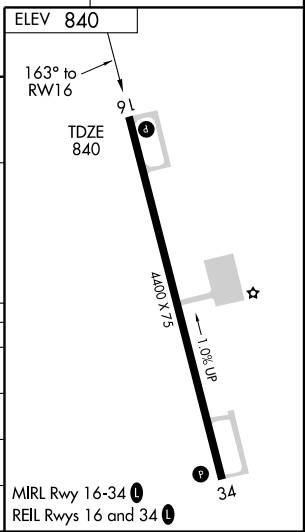
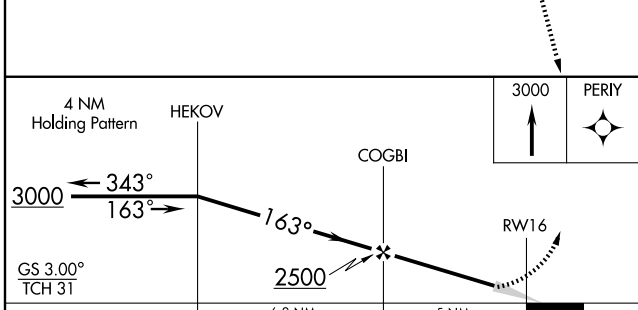
KANSAS CITY CENTER  
**135.575 323.15**

UNICOM  
**122.8 (CTAF)**



NC-3, 22 OCT 2009 to 19 NOV 2009

NC-3, 22 OCT 2009 to 19 NOV 2009



CATEGORY	A	B	C	D
LPV DA	1247-1½ 407 (500-1½)			
LNAV/VNAV DA	1364-2 524 (600-2)			
LNAV MDA	1360-1 520 (600-1)	1360-1½ 520 (600-1½)	1360-1¾ 520 (600-1¾)	
CIRCLING	1440-1 600 (600-1)	1440-1½ 600 (600-1½)	1440-2 600 (600-2)	