

RNAV (GPS) RWY 36

BROOKFIELD/ NORTH CENTRAL MISSOURI RGNL (M08)

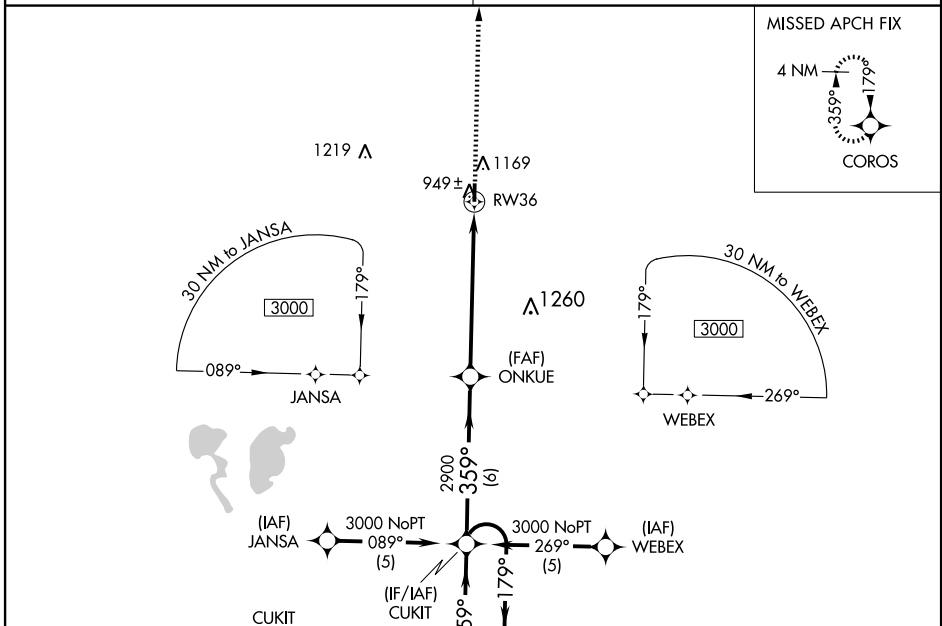
APP CRS 359°	Rwy Idg 4003
	TDZE 834
	Apt Elev 843

⚠ Use Chillicothe Muni altimeter setting; if not received, use Kirksville
⚠ NA Rgnl altimeter setting and increase all MDAs 40 feet.
 Procedure NA at night.
 GPS or RNP-0.3 required. DME/DME RNP-0.3 NA.

MISSED APPROACH: Climb to 3000 direct
 COROS WP and hold.

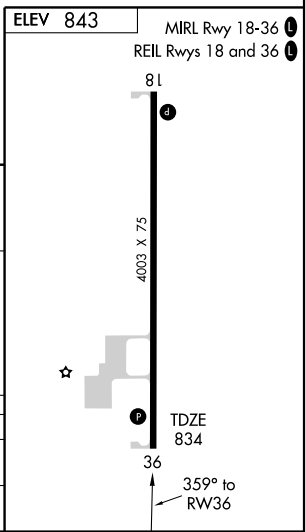
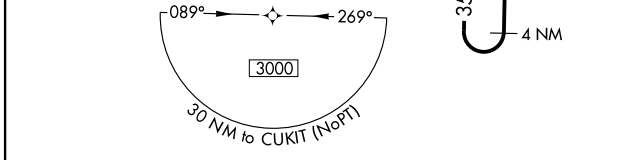
KANSAS CITY CENTER
125.25 381.5

CTAF
122.9



NC-3, 22 OCT 2009 to 19 NOV 2009

NC-3, 22 OCT 2009 to 19 NOV 2009



CATEGORY	A	B	C	D
LNAV MDA	1420-1	586 (600-1)	NA	NA
CIRCLING	1580-1	737 (800-1)	NA	NA