

APP CRS 228°	Rwy Idg 4300
	TDZE 2864
	Apt Elev 2869

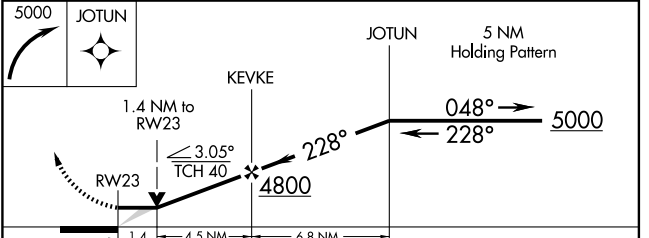
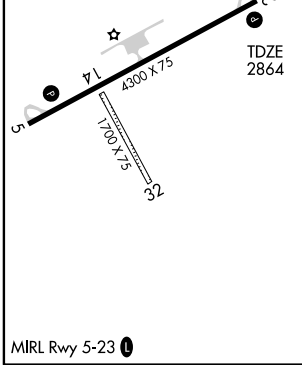
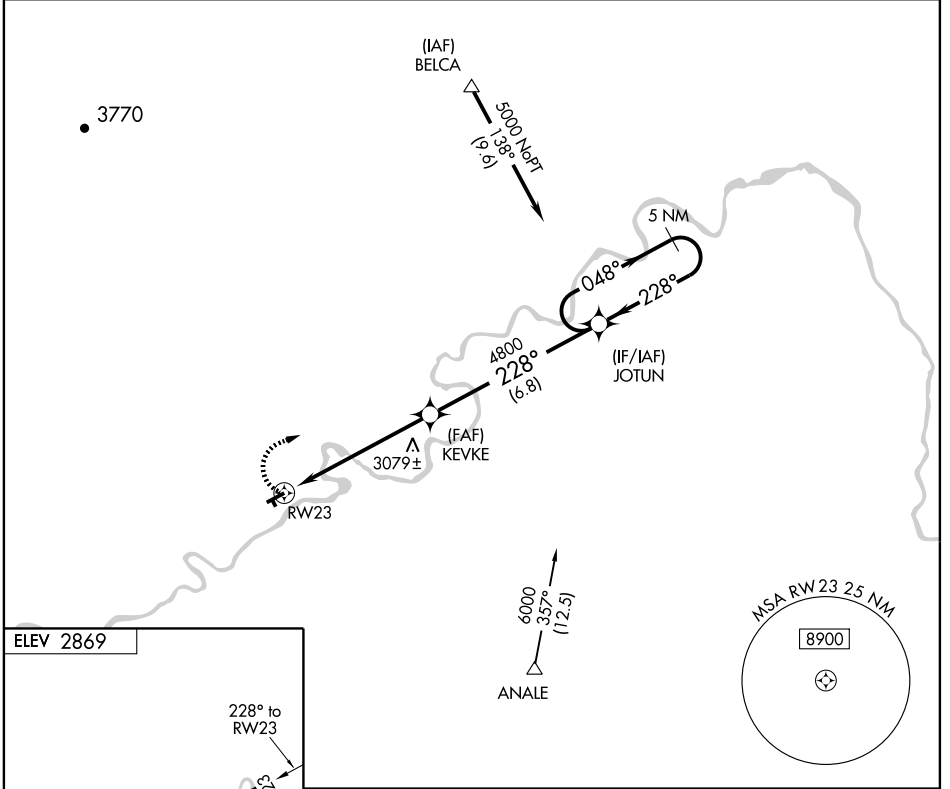
RNAV (GPS) RWY 23

FORT BENTON (79S)

⚠ DME/DME RNP-0.3 NA. Procedure NA at night. When local altimeter setting not received, use Great Falls altimeter setting and increase all MDA 280 feet and all Cat B and C visibilities 1 mile.

⚠ MISSED APPROACH: Climbing right turn to 5000 direct JOTUN and hold.

AWOS-A 122.8	SALT LAKE CENTER 133.4 285.4	UNICOM 122.8 (CTAF) ①
------------------------	--	--



CATEGORY	A	B	C	D
LNAV MDA	3340-1	476 (500-1)	3340-1¼ 476 (500-1¼)	NA
CIRCLING	3340-1	471 (500-1)	3340-1½ 471 (500-1½)	NA

NW-1, 22 OCT 2009 to 19 NOV 2009

NW-1, 22 OCT 2009 to 19 NOV 2009